



## JIUHE DHBT80-16-176 Diesel Trailer Concrete Boom Pump Overall Hydraulic

Our Product Introduction

for more products please visit us on [concretepumpstrucks.com](http://concretepumpstrucks.com)

### Basic Information

- Place of Origin: CHINA
- Brand Name: JIUHE
- Certification: ISO CE
- Model Number: 80m<sup>3</sup>/h
- Minimum Order Quantity: 1
- Packaging Details: 40 CONTAINER
- Delivery Time: 15 WORKING DAYS
- Payment Terms: L/C, T/T
- Supply Ability: 100SET



### Product Specification

- Brand: JIUHE
- Warranty: 1 Year
- Condition: New
- Color: As Requested
- Keyword: Concrete Pump
- Main Pump: Kawasaki
- Cylinder Diameter: 200mm
- Hopper Capacity: 0.45m<sup>3</sup>
- Max. Aggregate Diameter: 40mm
- Max. Delivery Distance: 1000m
- Max. Delivery Height: 250m
- Max. Horizontal Delivery Distance: 800m
- Max. Theoretical Conveying Capacity: 90m<sup>3</sup>/h
- Outlet Diameter: 125mm



### More Images



## 2023 hot China JIUHE DHBT80-16-176 Diesel trailer or stationary price Concrete boom pump overall hydraulic for sale

Introducing the 80m<sup>3</sup>/h Hydraulic Trailer Pump by JIUHE GROUP, an exceptional piece of engineering equipment that combines state-of-the-art technology with time-tested design to provide unparalleled advantages for your construction projects. Here are the key features and advantages of our 80m<sup>3</sup>/h Hydraulic Trailer Pump:

**1.High Productivity:** Our 80m<sup>3</sup>/h Hydraulic Trailer Pump boasts outstanding pumping capacity, handling 80 cubic meters of concrete per hour, ensuring rapid progress in construction schedules. It is suitable for both small and large-scale construction projects.

**2.Exceptional Pumping Performance:** The hydraulic trailer pump features an efficient hydraulic system and precise pumping mechanism, ensuring stable and reliable pumping performance. It delivers uniform pumping regardless of concrete mix, reducing waste.

**3.Convenient Operation:** Designed with operator convenience in mind, the hydraulic trailer pump is easy to operate. Equipped with an intuitive control panel, operators can easily master the equipment, enhancing construction efficiency.

**4.Robust Durability:** The 80m<sup>3</sup>/h Hydraulic Trailer Pump is constructed using high-strength materials and impeccable manufacturing processes, ensuring the equipment's durability. It can withstand testing conditions in various challenging construction environments and operate reliably over the long term.

**5.Versatile Multi-Purpose:** This hydraulic trailer pump is not limited to concrete pumping; it can also be used for conveying mortar, paste-like materials, and other granular substances, making it a versatile construction tool.

Item		Unit	Parameter
Pumping system	Max. theoretical delivery volume	m <sup>3</sup> /h	80
	Max. theoretical delivery pressure	Mpa	15.7
	Max. theoretical delivery height	m	250
	Max. theoretical delivery distance	m	1000
	Max. delivery frequency	times/min	26 (low pressure); 16 (high pressure)
	Type of distribution valve		S tube valve
	Specification of delivery cylinder	mm	200×1650
	Specification of main cylinder	mm	Φ140/90×1650
	Volume of gasoline tank	L	420
	Hopper capacity	L	600
	Hoisting height	mm	1450
	Output opening diameter	mm	150
	Inner dia. of delivery pipe	mm	125
	Fuel consumption		228g/kwh
	Power of diesel engine	Kw	176
	Rated rotate speed	r/min	2300
	Idling speed	r/min	800
Hydraulic system	Voltage of battery cell	V	24VDC
	Volume of oil tank	L	150
	Hydraulic oil circuit type		Open circuit
	Max. oil pressure of main system	MPa	32
Other parameters	Max. oil pressure of mixing system	MPa	14
	Max. mixing rotate speed	r/min	24
	Concrete slump	mm	80 200
	Allowable max dia. of aggregate	mm	Pebble50, crushed stone 40
	Dimension (length×width× height)	mm	6600×1930×2190
	Weight	Kg	6800









## COMPANY





## CERTIFICATE



**Trade Assurance**

100% protection for product quality and on-time shipment.



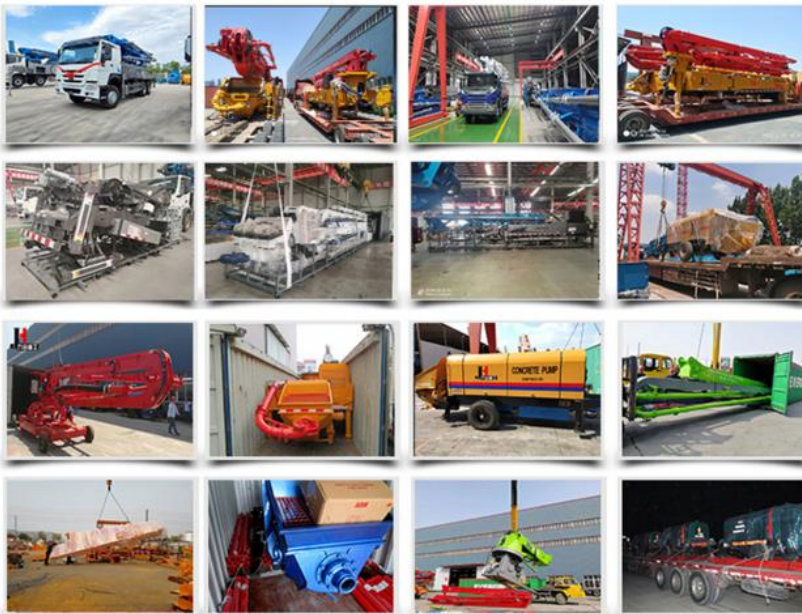
## Customer Visit



## Exhibition



## Packing



## Development strategy

Strives for the survival by the quality, seek development by science and technology

## Corporate philosophy

People-oriented, science and technology enterprise, recruiting high level scientific and technological personnel, actively introduce advanced technology at home and abroad

## JiuHe Service

As a professional company, we promise as following:

**JIUHE HEAVEY INDUSTRY MACHINERY service system MAX customer experiences.**

### A. Pre-sales service:

1. Selecting the most suitable equipment,
2. Designing your personal machinery according to special construction demands,
3. Training your technicians to operate our equipment,
4. Providing advice to ensure equipment running well in various construction. environments,
5. Making new construction scheme if necessary.

### B. Sales service:

1. Equipment delivery transport agent,
2. Equipment quality control before delivery,
3. Introduce our service system to customers.

**C. After-sales service:**

1. Making the first construction scheme,
2. Installing and debugging your equipment,
3. Troubleshooting on site, prompt and initiative,
4. door to door accessories and parts,
5. Opportunities to get technical communications with our engineers.

**D. Value-added service:**

1. Overall process and zero distance technology tracking service for key projects,
2. Carry out large maintenance business,
3. Regular equipment checking service,
4. Technology update,
4. Provide professional periodic maintenance standards for customers.

**JIUHE HEAVEY INDUSTRY MACHINERY Service Commitments for sold equipment:**

1. Dispatch technicians to install and debug equipment in time if necessary,
2. Provide free maintenance service for the products which have product quality problems within a year after the delivery,
3. Provide free operation and maintenance training service for users
4. Provide lifelong paid maintenance service, accessories and parts supply for the sold products.

□



**Qingdao Jiuhe Heavy Industry Machinery Co., Ltd**



+8618765268972



bella@jiuhezg.com



concretepumpstrucks.com

No.977 Qingwei Road, Jinkou Town, Jimo, Qingdao.