

JIUHE Low Fuel Consumption HB58K Big Concrete Pump Truck 58m Truck Mounted Concrete Pump Large Concrete Pump

Our Product Introduction

for more products please visit us on concretepumpstrucks.com

Basic Information

- Place of Origin: CHINA
- Brand Name: JIUHE
- Certification: ISO CE
- Model Number: 58m
- Minimum Order Quantity: 1
- Delivery Time: 25 WORKING DAYS
- Payment Terms: L/C, T/T
- Supply Ability: 100SET



Product Specification

- Brand: JIUHE
- Warranty: 1 Year
- Condition: New
- Color: As Requested
- Keyword: Concrete Pump Truck
- Main Pump: Rexroth
- Wireless Remote Control: HBC
- Highlight:
 - upper driven Diesel Trailer Mounted Concrete Pump jiuhe
 - upper driven Diesel Mounted Concrete Pump jiuhe
 - Diesel Mounted upper driven Concrete Pump jiuhe



More Images



Product Description

JIUHE Low fuel consumption HB58K big concrete pump truck 58m truck mounted concrete pump price large concrete pump



- 1.Extremely High Pumping Efficiency:** The 58-meter pump truck's efficient pumping system can rapidly convey concrete, reducing construction project time and increasing productivity.
- 2.Suitable for Heavy-Duty Engineering Applications:** Ideal for large-scale high-rise buildings, bridges, tunnels, and other heavy-duty projects, it can easily handle challenging concrete pumping tasks.
- 3.Flexibility and Ease of Operation:** The design of Jihe Heavy Industry's 58-meter pump truck is flexible and user-friendly, allowing it to adapt to different work scenarios and pumping requirements. Operators can easily control the pumping process, improving work efficiency.
- 4.Durability and Low Maintenance Costs:** Jihe Heavy Industry manufactures the pump truck using high-quality materials and advanced manufacturing processes, ensuring exceptional reliability and durability, reducing maintenance costs and downtime.
- 5.Safety and Easy Maintenance:** The 58-meter pump truck is equipped with advanced safety features to ensure job site safety. Additionally, the company provides comprehensive after-sales service and maintenance support to ensure the pump truck's smooth operation and upkeep.

I. Chassis		
1	Chassis Brand	Sinotruk/Foton
2	Power	440HP/470HP
II. Boom system		
1	Max.Vertical height(M)	58
2	Max.Horizontal Concrete Placing radius (M)	53.1
3	Concrete placing depth(M)	45
4	Boom Control mode	Electric proportional control
5	Boom no.	6
6	opening mode of landing leg	X-R
7	Boom structure	RZ
8	Rotating angle	470
9	Length of end hose(MM)	3000
10	Concrete delivery pipe dia.	125
III. Electric Control System		
1	Working voltage (V):	24
IV. Hydraulic transmission system		
1	Type of hydraulic system	Open type
2	System working pressure (Mpa)	31.5
3	Hydraulic fuel tank capacity (l)	600
4	Cooling mode of hydraulic oil	Forced-air Cooling
VI. Pumping system		
1	Form of concrete distribution valve	S Valve
2	Concrete cylinder	260
3	Maximum feeding height (MM)	1550
4	Hopper capacity(M3)	0.65
5	Slump of pumped concrete	160-220
6	Dimension of allowable maximum aggregate (MM)	40
7	Lubricating method	Centralized lubrication







Projects
工程案例





COMPANY



CERTIFICATE



Trade Assurance

100% protection for product quality and on-time shipment.



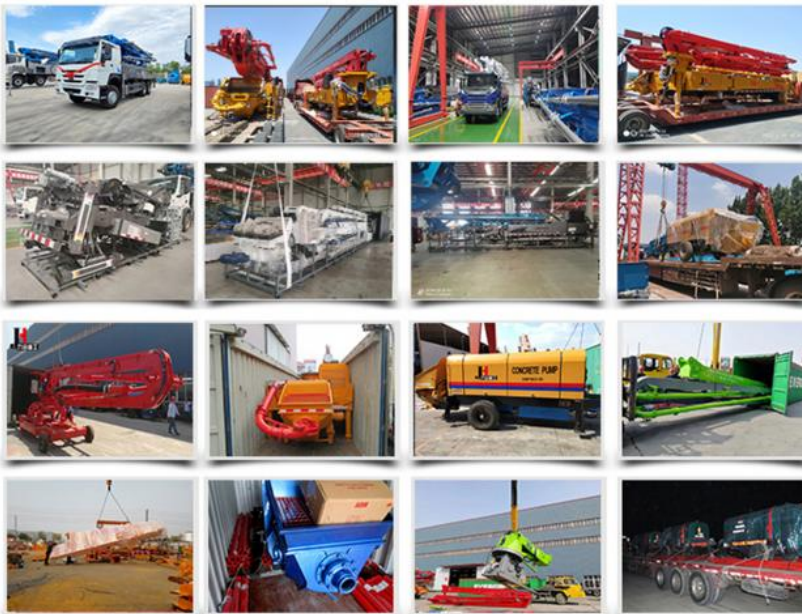
Customer Visit



Exhibition



Packing



Development strategy

Strives for the survival by the quality, seek development by science and technology

Corporate philosophy

People-oriented, science and technology enterprise, recruiting high level scientific and technological personnel, actively introduce advanced technology at home and abroad

JiuHe Service

As a professional company, we promise as following:

JIUHE HEAVEY INDUSTRY MACHINERY service system MAX customer experiences.

A. Pre-sales service:

1. Selecting the most suitable equipment,
2. Designing your personal machinery according to special construction demands,
3. Training your technicians to operate our equipment,
4. Providing advice to ensure equipment running well in various construction. environments,
5. Making new construction scheme if necessary.

B. Sales service:

1. Equipment delivery transport agent,
2. Equipment quality control before delivery,
3. Introduce our service system to customers.

C. After-sales service:

1. Making the first construction scheme,
2. Installing and debugging your equipment,
3. Troubleshooting on site, prompt and initiative,
4. door to door accessories and parts,
5. Opportunities to get technical communications with our engineers.

D. Value-added service:

1. Overall process and zero distance technology tracking service for key projects,
2. Carry out large maintenance business,
3. Regular equipment checking service,
4. Technology update,
4. Provide professional periodic maintenance standards for customers.

JIUHE HEAVEY INDUSTRY MACHINERY Service Commitments for sold equipment:

1. Dispatch technicians to install and debug equipment in time if necessary,
2. Provide free maintenance service for the products which have product quality problems within a year after the delivery,
3. Provide free operation and maintenance training service for users
4. Provide lifelong paid maintenance service, accessories and parts supply for the sold products.



Qingdao Jiuhe Heavy Industry Machinery Co., Ltd



+8618765268972



bella@jiuhezg.com



concretepumpstrucks.com

No.977 Qingwei Road, Jinkou Town, Jimo, Qingdao.