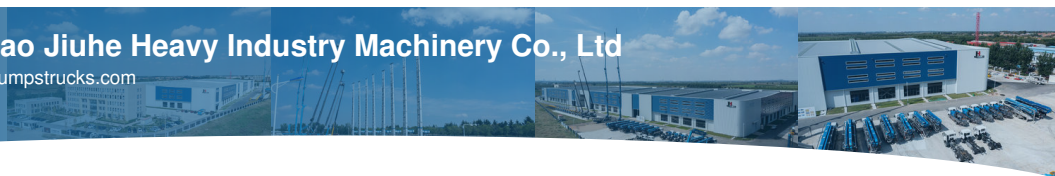




**Qingdao Jiuhe Heavy Industry Machinery Co., Ltd**  
concretepumpstrucks.com



## China Truck Concrete Pump Factory JIUHE Boom Pump Truck 30m 38m 52m 58m 63m 70m Concrete Pump Truck

Our Product Introduction

for more products please visit us on [concretepumpstrucks.com](http://concretepumpstrucks.com)

### Basic Information

- Place of Origin: CHINA
- Brand Name: JIUHE
- Certification: ISO CE
- Model Number: 63m
- Minimum Order Quantity: 1
- Delivery Time: 25 WORKING DAYS
- Payment Terms: L/C, T/T
- Supply Ability: 100SET



### Product Specification

- Brand: JIUHE
- Warranty: 1 Year
- Condition: New
- Color: As Requested
- Keyword: Concrete Pump Truck
- Main Pump: Rexroth
- Wireless Remote Control: HBC



### More Images





1. **Extremely High Pumping Efficiency:** The 63-meter pump truck's efficient pumping system can rapidly convey concrete, reducing construction project time and increasing productivity.
2. **Suitable for Heavy-Duty Engineering Applications:** Ideal for large-scale high-rise buildings, bridges, tunnels, and other heavy-duty projects, it can easily handle challenging concrete pumping tasks.
3. **Flexibility and Ease of Operation:** The design of Jihe Heavy Industry's 63-meter pump truck is flexible and user-friendly, allowing it to adapt to different work scenarios and pumping requirements. Operators can easily control the pumping process, improving work efficiency.
4. **Durability and Low Maintenance Costs:** Jihe Heavy Industry manufactures the pump truck using high-quality materials and advanced manufacturing processes, ensuring exceptional reliability and durability, reducing maintenance costs and downtime.
5. **Safety and Easy Maintenance:** The 63-meter pump truck is equipped with advanced safety features to ensure job site safety. Additionally, the company provides comprehensive after-sales service and maintenance support to ensure the pump truck's smooth operation and upkeep.

#### I. Chassis

1	Chassis Brand	Foton/Faw/Isuzu
2	Driving type	8*4
3	Power	460HP
4	Steering type	Left hand drive
5	Emission standard	China 5

#### II. Boom system

1	Max. Vertical height(M)	63
2	Max. Horizontal Concrete Placing radius (M)	57.5
3	Concrete placing depth(M)	45.1
4	Boom structure	63X-6RZ
5	Rotating angle of turret	360°
6	Length of end hose (MM)	3000
7	Concrete delivery pipe dia.	125

#### III. Electric Control System

1	Working voltage(V):	24
---	---------------------	----

#### IV. Hydraulic transmission system

1	Type of hydraulic system	Open type
2	System working pressure (Mpa)	31.5
3	Displacement of main hydraulic oil pump (ml/r)	260
4	Hydraulic fuel tank capacity (l)	600
5	Cooling mode of hydraulic oil	Forced-air Cooling

#### VII. Pumping system

1	Form of concrete distribution valve	S Valve
2	Concrete cylinder	260
3	Maximum feeding height (MM)	1550
4	Hopper capacity (M3 )	0.65
5	Slump of pumped concrete	160-220
6	Dimension of allowable maximum aggregate (MM)	40
7	Lubricating method	Centralized lubrication



## Projects 工程案例







## COMPANY



## CERTIFICATE



**Trade Assurance**

100% protection for product quality and on-time shipment.



## Customer Visit

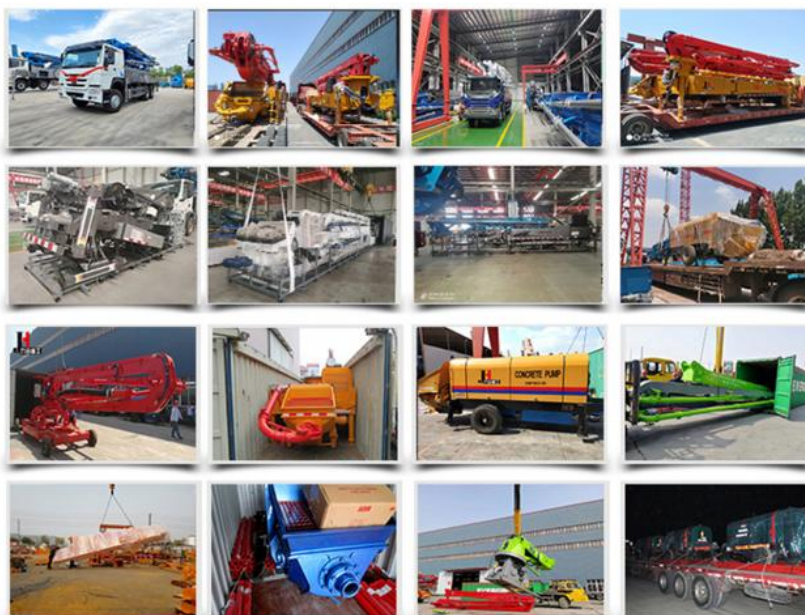




## Exhibition



## Packing



## Development strategy

Strives for the survival by the quality, seek development by science and technology

## Corporate philosophy

People-oriented, science and technology enterprise, recruiting high level scientific and technological personnel, actively introduce advanced technology at home and abroad

## JiuHe Service

As a professional company, we promise as following:

**JIUHE HEAVEY INDUSTRY MACHINERY service system MAX customer experiences.**

### A. Pre-sales service:

1. Selecting the most suitable equipment,
2. Designing your personal machinery according to special construction demands,
3. Training your technicians to operate our equipment,
4. Providing advice to ensure equipment running well in various construction. environments,
5. Making new construction scheme if necessary.

### B. Sales service:

1. Equipment delivery transport agent,
2. Equipment quality control before delivery,
3. Introduce our service system to customers.

**C. After-sales service:**

1. Making the first construction scheme,
2. Installing and debugging your equipment,
3. Troubleshooting on site, prompt and initiative,
4. door to door accessories and parts,
5. Opportunities to get technical communications with our engineers.

**D. Value-added service:**

1. Overall process and zero distance technology tracking service for key projects,
2. Carry out large maintenance business,
3. Regular equipment checking service,
4. Technology update,
4. Provide professional periodic maintenance standards for customers.

**JIUHE HEAVEY INDUSTRY MACHINERY Service Commitments for sold equipment:**

1. Dispatch technicians to install and debug equipment in time if necessary,
2. Provide free maintenance service for the products which have product quality problems within a year after the delivery,
3. Provide free operation and maintenance training service for users
4. Provide lifelong paid maintenance service, accessories and parts supply for the sold products.



**Qingdao Jiuhe Heavy Industry Machinery Co., Ltd**



+8618765268972



bella@jiuhezg.com



concretepumpstrucks.com

No.977 Qingwei Road, Jinkou Town, Jimo, Qingdao.