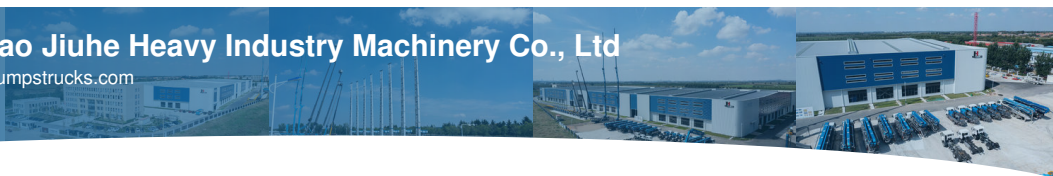




Qingdao Jiuhe Heavy Industry Machinery Co., Ltd  
concretepumpstrucks.com



## N30 Wet Shotcrete Machine Concrete Spraying Factory JIUHE Brand 30m<sup>3</sup>/H Truck Mounted Wet Shotcrete Machine

Our Product Introduction

for more products please visit us on [concretepumpstrucks.com](http://concretepumpstrucks.com)

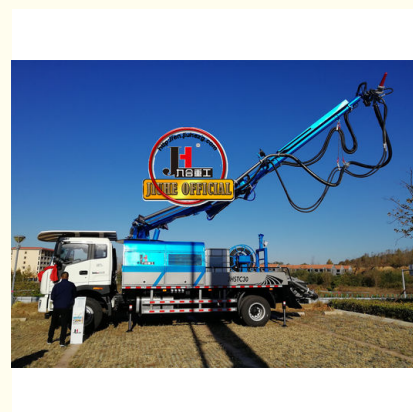
### Basic Information

- Place of Origin: CHINA
- Brand Name: JIUHE
- Certification: ISO CE
- Model Number: 30m<sup>3</sup>/h
- Minimum Order Quantity: 1
- Delivery Time: 15 WORKING DAYS
- Payment Terms: L/C, T/T
- Supply Ability: 100SET



### Product Specification

- Power Type: Diesel
- Max. Vertical Conveying Distance: 16m
- Max. Horizontal Conveying Distance: 24m
- Productivity: 30m<sup>3</sup>/h
- Highlight: 16.2T Truck Mounted Concrete Spraying machine 30m<sup>3</sup>/h, 16.2T 30m<sup>3</sup>/h shotcrete machine, 16.2T shotcrete machine 30m<sup>3</sup>/h



### More Images



## Product Description

N30 Wet shotcrete machine concrete spraying factory JIUHE brand 30m<sup>3</sup>/h truck mounted wet shotcrete machine

□

### Shotcrete Machine Brief introduction

- 1.Outstanding Performance:** Crafted using advanced technology and high-quality materials, the Wet Spraying Tank Truck ensures exceptional spraying results, guaranteeing top-notch quality and efficiency for your construction projects.
- 2.Efficient and Energy-Saving:** Our Wet Spraying Tank Truck incorporates energy-saving technology, effectively reducing energy consumption. Its precise spraying system minimizes material wastage, ultimately lowering construction costs.
- 3.Reliable Stability:** Rigorous quality control and testing ensure that our Wet Spraying Tank Truck maintains stable performance even under harsh conditions. This reliability ensures uninterrupted construction progress , enhancing project management.
- 4.User-Friendly Design:** Designed with user convenience in mind, the Wet Spraying Tank Truck offers ease of operation. Operators can easily master the equipment, improving work efficiency. Safety features and an emergency stop system prioritize operator well-being.
- 5.Versatility:** Beyond road construction, our Wet Spraying Tank Truck finds applications in various engineering fields, including tunnel construction and mining. Its versatility makes it a multi-purpose construction asset.
- 6.Environmentally Friendly:** Employing eco-friendly technology, the Wet Spraying Tank Truck effectively controls dust and waste production. This contributes to maintaining an environmentally friendly construction site and aligning with modern environmental standards.
- 7.Comprehensive After-Sales Service:** At Ninefold Heavy Industries, customer satisfaction is our top priority. We offer comprehensive after-sales services, including training, maintenance, and spare parts supply.

1.whole machine data	
Model	JHSTC30
total length	9956mm
total width	2500mm
total height	3268mm
rated weight	16.2T
2. Boom & support legs data	
spraying height	16m (15m machine height)
spraying width	24m (23.2 machine width)
big boom pitching angle	0-70°
small boom pitching angle	+20°-110°
boom rotation angle	360°
spray-head swing angle	360°
3. pumping system data	
driving mode	Motor
Motor rated power	55kw
Motor working voltage	380V
concrete delivery capacity	30m <sup>3</sup> /h
hydraulic system	Open
delivery pipe dia.	Φ125 φ80mm reducing
spray nozzle dia.	Φ50mm













## COMPANY



## CERTIFICATE



**Trade Assurance**

100% protection for product quality and on-time shipment.





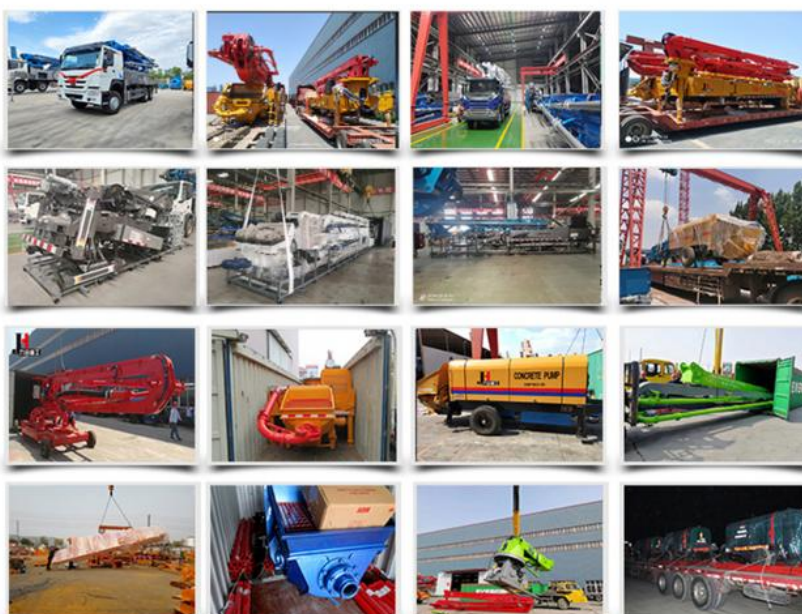
## Customer Visit



## Exhibition



## Packing



## Development strategy



Strives for the survival by the quality, seek development by science and technology

### **Corporate philosophy**

People-oriented, science and technology enterprise, recruiting high level scientific and technological personnel, actively introduce advanced technology at home and abroad

### **JiuHe Service**

As a professional company, we promise as following:

#### **JIUHE HEAVEY INDUSTRY MACHINERY service system MAX customer experiences.**

##### **A. Pre-sales service:**

1. Selecting the most suitable equipment,
2. Designing your personal machinery according to special construction demands,
3. Training your technicians to operate our equipment,
4. Providing advice to ensure equipment running well in various construction environments,
5. Making new construction scheme if necessary.

##### **B. Sales service:**

1. Equipment delivery transport agent,
2. Equipment quality control before delivery,
3. Introduce our service system to customers.

##### **C. After-sales service:**

1. Making the first construction scheme,
2. Installing and debugging your equipment,
3. Troubleshooting on site, prompt and initiative,
4. door to door accessories and parts,
5. Opportunities to get technical communications with our engineers.

##### **D. Value-added service:**

1. Overall process and zero distance technology tracking service for key projects,
2. Carry out large maintenance business,
3. Regular equipment checking service,
4. Technology update,
4. Provide professional periodic maintenance standards for customers.

#### **JIUHE HEAVEY INDUSTRY MACHINERY Service Commitments for sold equipment:**

1. Dispatch technicians to install and debug equipment in time if necessary,
2. Provide free maintenance service for the products which have product quality problems within a year after the delivery,
3. Provide free operation and maintenance training service for users
4. Provide lifelong paid maintenance service, accessories and parts supply for the sold products.

**Qingdao Jiuhe Heavy Industry Machinery Co.,Ltd**



**Bella Chao**  
Sales Manager  
+86-18765268972



 +86-18765268972

 +86-15764227812

 +86-15764227812

 Bella@jiuhezg.com



**Qingdao Jiuhe Heavy Industry Machinery Co., Ltd**



+8618765268972



bella@jiuhezg.com



concretepumpstrucks.com

No.977 Qingwei Road, Jinkou Town, Jimo, Qingdao.