



## Construction Machinery 15m 17m Walking Type Hydraulic Mobile Concrete Placing Boom/Concrete Spreader

Our Product Introduction

for more products please visit us on [concretepumpstrucks.com](http://concretepumpstrucks.com)

### Basic Information

- Place of Origin: CHINA
- Brand Name: JIUHE
- Certification: ISO CE
- Model Number: 13m 15m 17m 21m
- Minimum Order Quantity: 1
- Price: 17000-23000USD/SET
- Delivery Time: 15 WORKING DAYS
- Payment Terms: L/C, T/T
- Supply Ability: 100SET

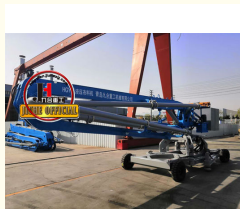


### Product Specification

- Model: 15m 17m
- Weight: 3500kg
- UNIQUE SELLING POINT: Fully Hydraulic System
- Condition: New
- Highlight: Construction machinery spider boom pump, 17m walking type spider boom pump, 15m walking type placing boom pump



### More Images



Our Product

### Product Description

Construction machinery 15m 17m walking type hydraulic mobile concrete placing boom/concrete spreader  
In the voice of JIUHE MACHINERY GROUP, we are pleased to introduce the advantages of our Mobile Concrete Placing Boom:

1. Precision Construction: Our Mobile Concrete Placing Boom is equipped with advanced hydraulic systems and precision control technology to ensure the accurate placement of concrete. This means that in high-rise buildings, bridges, tunnels, or other construction projects, you can achieve highly precise and consistent concrete placement, reducing waste and rework.

2.Expanded Construction Range: The Mobile Concrete Placing Boom features adjustable arm lengths, allowing easy coverage of large construction areas, including tall buildings, deep excavations, and distant work sites. This improves construction efficiency and reduces the need for equipment repositioning.

3.High Efficiency and Cost Savings: Our placing boom offers a high delivery rate, enabling rapid completion of concrete construction tasks. This reduces labor costs and construction timelines, contributing to overall project efficiency.

4.Convenient Mobility: The Mobile Concrete Placing Boom can be easily transported to different job sites without the need for extensive installation and dismantling. This enhances project flexibility while saving valuable time.

5.Safety: Our boom's design takes safety factors into consideration, with stable support systems and safety control features to ensure the highest level of safety during construction.

6.Reliability: JIUHE's Mobile Concrete Placing Boom is carefully designed and rigorously tested to ensure stable operation in various job site conditions, enduring continuous use.

序号 NO.	目ITEM	位UNIT	参数PARAMETER	参数PARAMETER
1	最大布料半径 Max. placing radius	M	15	17
2	大臂 度 Big arm length	M	6	6.66
3	中臂 度 Medium arm length	M	5	5.73
4	小臂 度 Small arm length	M	4	4.61
5	布料 管 Hose	MM	Ø 125x3000	Ø 125x3000
6	大臂仰角 Big arm elevation	°	0-85	0-85
7	中臂仰角 Medium arm elevation	°	0 180	0 180
8	小臂仰角 Small arm elevation	°	0 180	0 180
9	尾部回 半径 Tail Rotary radius	MM	2810	3510
10	Rated voltage 定 力	V	380V	380V
11	机功率 Total Power	KW	4	5.5
12	系 力 System Pressure	Mpa	24	24
13	回 范 Rotary range	°	0 360	0 360
14	支腿跨度 Outrigger span	MM	4300x4300	4300x4300
15	整机高度 Overall height	MM	2600	3640
16	整机重量 Total weight	KG	4800	6500
17	配重重量 Counter weight	KG	2200	2200
18	操作方式 Control mode	---	面板/无 遥控 Panel/ Wireless remote control	面板/无 遥控 Panel/ Wireless remote control







## COMPANY



## CERTIFICATE



**Trade Assurance**

100% protection for product quality and on-time shipment.



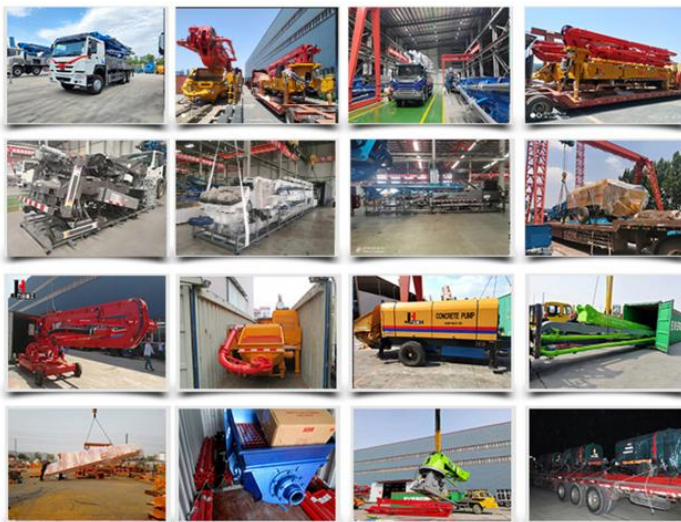
## Customer Visit



## Exhibition



## Packing



## Development strategy

Strives for the survival by the quality, seek development by science and technology

## Corporate philosophy

People-oriented, science and technology enterprise, recruiting high level scientific and technological personnel, actively introduce advanced technology at home and abroad

## JiuHe Service

As a professional company,we promise as following:

**JIUHE HEAVEY INDUSTRY MACHINERY service system MAX customer experiences.**

**A. Pre-sales service:**

1. Selecting the most suitable equipment,
2. Designing your personal machinery according to special construction demands,
3. Training your technicians to operate our equipment,
4. Providing advice to ensure equipment running well in various construction environments,
5. Making new construction scheme if necessary.

**B. Sales service:**

1. Equipment delivery transport agent,
2. Equipment quality control before delivery,
3. Introduce our service system to customers.

**C. After-sales service:**

1. Making the first construction scheme,
2. Installing and debugging your equipment,
3. Troubleshooting on site, prompt and initiative,
4. door to door accessories and parts,
5. Opportunities to get technical communications with our engineers.

**D. Value-added service:**

1. Overall process and zero distance technology tracking service for key projects,
2. Carry out large maintenance business,
3. Regular equipment checking service,
4. Technology update,
4. Provide professional periodic maintenance standards for customers.

**JIUHE HEAVEY INDUSTRY MACHINERY Service Commitments for sold equipment**

1. Dispatch technicians to install and debug equipment in time if necessary,
2. Provide free maintenance service for the products which have product quality problems within a year after the delivery,
3. Provide free operation and maintenance training service for users
4. Provide lifelong paid maintenance service, accessories and parts supply for the sold products.

**Qingdao Jiuhe Heavy Industry Machinery Co.,Ltd**



**Bella Chao**  
Sales Manager  
+86-18765268972



 +86-18765268972  
 +86-15764227812  
 +86-15764227812  
 Bella@jiuhezg.com



**Qingdao Jiuhe Heavy Industry Machinery Co., Ltd**



+8618765268972



bella@jiuhezg.com



concretepumpstrucks.com

No.977 Qingwei Road, Jinkou Town, Jimo, Qingdao.