



## 50m<sup>3</sup>/H Mini Mobile Concrete Pump With High Quality Trailer Concrete Pump With ISO CE Certificate

Our Product Introduction

for more products please visit us on [concretepumpstrucks.com](http://concretepumpstrucks.com)

### Basic Information

- Place of Origin: CHINA
- Brand Name: JIUHE
- Certification: ISO CE
- Model Number: 50m<sup>3</sup>/h
- Minimum Order Quantity: 1
- Packaging Details: 40 CONTAINER
- Delivery Time: 15 WORKING DAYS
- Payment Terms: L/C, T/T
- Supply Ability: 100SET



### Product Specification

- Brand: JIUHE
- Warranty: 1 Year
- Condition: New
- Color: As Requested
- Keyword: Concrete Pump
- Main Pump: Kawasaki
- Cylinder Diameter: 200mm
- Hopper Capacity: 0.45m<sup>3</sup>
- Max. Aggregate Diameter: 40mm
- Outlet Diameter: 125mm
- Type: Trailer Concrete Pump
- Weight: 4000kg
- Highlight: 50m<sup>3</sup>/h Trailer Concrete Pump, 50m<sup>3</sup>/h mobile concrete pump, mobile pump concrete ISO CE



### More Images



## Product Description

hot sale 50m<sup>3</sup>/h mini mobile concrete pump with high quality trailer concrete pump with ISO CE Certificate

Introducing the 50m<sup>3</sup>/h Hydraulic Trailer Pump by JIUHE GROUP, an exceptional piece of engineering equipment that combines state-of-the-art technology with time-tested design to provide unparalleled advantages for your construction projects. Here are the key features and advantages of our 50m<sup>3</sup>/h Hydraulic Trailer Pump:

- 1.High Productivity:** Our 50m<sup>3</sup>/h Hydraulic Trailer Pump boasts outstanding pumping capacity, handling 60 cubic meters of concrete per hour, ensuring rapid progress in construction schedules. It is suitable for both small and large-scale construction projects.
- 2.Exceptional Pumping Performance:** The hydraulic trailer pump features an efficient hydraulic system and precise pumping mechanism, ensuring stable and reliable pumping performance. It delivers uniform pumping regardless of concrete mix, reducing waste.
- 3.Convenient Operation:** Designed with operator convenience in mind, the hydraulic trailer pump is easy to operate. Equipped with an intuitive control panel, operators can easily master the equipment, enhancing construction efficiency.
- 4.Robust Durability:** The 50m<sup>3</sup>/h Hydraulic Trailer Pump is constructed using high-strength materials and impeccable manufacturing processes, ensuring the equipment's durability. It can withstand testing conditions in various challenging construction environments and operate reliably over the long term.
- 5.Versatile Multi-Purpose:** This hydraulic trailer pump is not limited to concrete pumping; it can also be used for conveying mortar, paste-like materials, and other granular substances, making it a versatile construction tool.

参数名称Item	位Unit	参数Parameter
送系 Pumping system	最大理 排放量 Max. theoretical delivery volume	m <sup>3</sup> /h 50
	最大理 送 力 Max. theoretical delivery pressure	MPa 13
	最大理 送高度 Max. theoretical delivery height (Φ125)	m 120
	最大理 送距 Max. theoretical delivery distance (Φ125)	m 350
	分配 型 Distribution valve type	S tube valve
	主油缸径×杆径×行程 Main oil cylinder specification: cylinder dia./rod dia. × stroke	mm φ125/80×1200
	送缸径×行程 Concrete cylinder specification	mm φ200×1200
	料斗容 Hopper capacity	L 500
	出料口直径 Output opening diameter	mm 150
力系 Power system	柴油机功率 Diesel engine power	KW 85
	定 速 Rated rotation speed	r/min 2200
液 系 Hydraulic system	液 油路形式 Type of Hydraulic oil circuit	式回路 Open oil circuit
	主油 Main oil pump	国 独 HANDOK from Korea
	送系 最高油 Maximum oil pressure of pumping system	MPa 28
	拌系 最高油 Maximum oil pressure of mixing system	14
	最高 拌速度 Highest mixing speed	r/min 24
	液 油箱容 Hydraulic oil tank capacity	L 300
其他参数 Other parameters	允 最大 粒直径 Allowable max. dia.of aggregate	mm 30
	拌 送管内径 Inner dia.of concrete delivery pipe	mm Φ125
	尺寸 (X X高)Dimension(length× width× height)	mm 5270×1860×2580
	主机 量 Weight	kg 4000





## COMPANY



## CERTIFICATE



**Trade Assurance**

100% protection for product quality and on-time shipment.



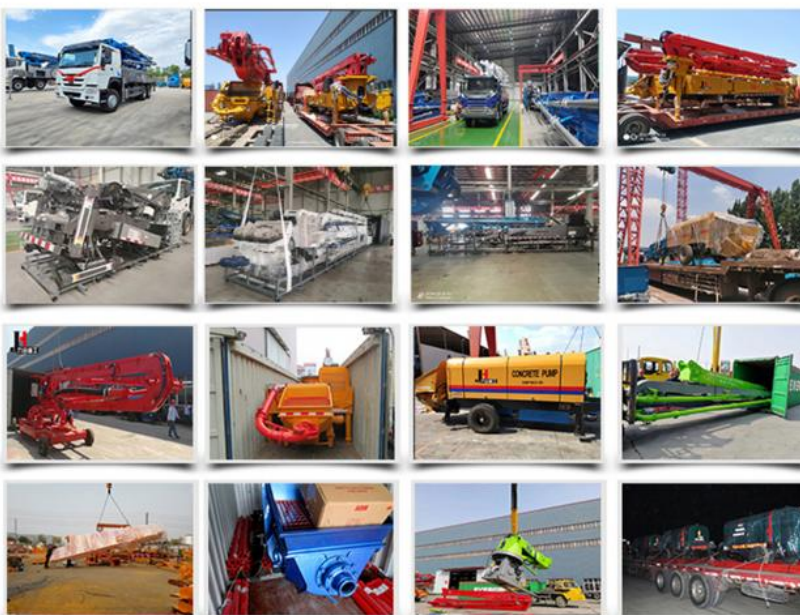
## Customer Visit



## Exhibition



## Packing



## Development strategy



Strives for the survival by the quality, seek development by science and technology

### **Corporate philosophy**

People-oriented, science and technology enterprise, recruiting high level scientific and technological personnel, actively introduce advanced technology at home and abroad

### **JiuHe Service**

As a professional company, we promise as following:

#### **JIUHE HEAVEY INDUSTRY MACHINERY service system MAX customer experiences.**

##### **A. Pre-sales service:**

1. Selecting the most suitable equipment,
2. Designing your personal machinery according to special construction demands,
3. Training your technicians to operate our equipment,
4. Providing advice to ensure equipment running well in various construction environments,
5. Making new construction scheme if necessary.

##### **B. Sales service:**

1. Equipment delivery transport agent,
2. Equipment quality control before delivery,
3. Introduce our service system to customers.

##### **C. After-sales service:**

1. Making the first construction scheme,
2. Installing and debugging your equipment,
3. Troubleshooting on site, prompt and initiative,
4. door to door accessories and parts,
5. Opportunities to get technical communications with our engineers.

##### **D. Value-added service:**

1. Overall process and zero distance technology tracking service for key projects,
2. Carry out large maintenance business,
3. Regular equipment checking service,
4. Technology update,
4. Provide professional periodic maintenance standards for customers.

#### **JIUHE HEAVEY INDUSTRY MACHINERY Service Commitments for sold equipment:**

1. Dispatch technicians to install and debug equipment in time if necessary,
2. Provide free maintenance service for the products which have product quality problems within a year after the delivery,
3. Provide free operation and maintenance training service for users
4. Provide lifelong paid maintenance service, accessories and parts supply for the sold products.

**Qingdao Jiuhe Heavy Industry Machinery Co.,Ltd**



**Bella Chao**  
Sales Manager  
+86-18765268972



+86-18765268972

+86-15764227812

+86-15764227812

Bella@jiuhezg.com



**Qingdao Jiuhe Heavy Industry Machinery Co., Ltd**



+8618765268972



bella@jiuhezg.com



concretepumpstrucks.com

No.977 Qingwei Road, Jinkou Town, Jimo, Qingdao.