



## Diesel Concrete Cement Pumping Machine Spare Parts Stationary Trailer Concrete Pump Machine

Our Product Introduction

for more products please visit us on [concretepumpstrucks.com](http://concretepumpstrucks.com)

### Basic Information

- Place of Origin: CHINA
- Brand Name: JIUHE
- Certification: ISO CE
- Model Number: 80m<sup>3</sup>/h
- Minimum Order Quantity: 1
- Packaging Details: 40 CONTAINER
- Delivery Time: 15 WORKING DAYS
- Payment Terms: L/C, T/T
- Supply Ability: 100SET



### Product Specification

- Brand: JIUHE
- Warranty: 1 Year
- Condition: New
- Color: As Requested
- Keyword: Concrete Pump
- Main Pump: Kawasaki
- Cylinder Diameter: 200mm
- Hopper Capacity: 0.45m<sup>3</sup>
- Max. Aggregate Diameter: 40mm
- Max. Delivery Distance: 1000m
- Max. Delivery Height: 250m
- Max. Horizontal Delivery Distance: 800m
- Max. Theoretical Conveying Capacity: 90m<sup>3</sup>/h
- Outlet Diameter: 125mm



### More Images



### Product Description

Diesel concrete cement pumping machine spare parts stationary trailer concrete pump machine for sale price

Introducing the 80m<sup>3</sup>/h Hydraulic Trailer Pump by JIUHE GROUP, an exceptional piece of engineering equipment that combines state-of-the-art technology with time-tested design to provide unparalleled advantages for your construction projects. Here are the key features and advantages of our 80m<sup>3</sup>/h Hydraulic Trailer Pump:

1. High Productivity: Our 80m<sup>3</sup>/h Hydraulic Trailer Pump boasts outstanding pumping capacity, handling 60 cubic meters of concrete per hour, ensuring rapid progress in construction schedules. It is suitable for both small and large-scale construction projects.
2. Exceptional Pumping Performance: The hydraulic trailer pump features an efficient hydraulic system and precise pumping mechanism, ensuring stable and reliable pumping performance. It delivers uniform pumping regardless of concrete mix, reducing waste.
3. Convenient Operation: Designed with operator convenience in mind, the hydraulic trailer pump is easy to operate. Equipped with an intuitive control panel, operators can easily master the equipment, enhancing construction efficiency.
4. Robust Durability: The 80m<sup>3</sup>/h Hydraulic Trailer Pump is constructed using high-strength materials and impeccable manufacturing processes, ensuring the equipment's durability. It can withstand testing conditions in various challenging construction environments and operate reliably over the long term.
5. Versatile Multi-Purpose: This hydraulic trailer pump is not limited to concrete pumping; it can also be used for conveying mortar, paste-like materials, and other granular substances, making it a versatile construction tool.

Our Product Introduction

| Item               |                                       | Unit              | Data  |
|--------------------|---------------------------------------|-------------------|---|
| System Performance | Maximum theoretical displacement      | m <sup>3</sup> /h | 80  |
|                    | Maximum theoretical delivery pressure | Mpa               | 16  |
|                    | Distribution valve type               |                   | S-pipe valve                                      |
|                    | Delivery cylinder size                | mm                | 200×1,650   |
|                    | Main oil cylinder size                | mm                | 140/90×1,650                                      |
|                    | Oil tank capacity                     | L                 | 420   |
|                    | Hopper capacity                       | L                 | 600   |
|                    | Feeding height                        | mm                | 1,400   |
|                    | Discharge outlet diameter             | mm                | 150   |
|                    | Carrier pipe inner diameter           | mm                | 125   |
| Power system       | Diesel engine power                   | Kw                | 176   |
|                    | Rated rotation speed                  | rpm               | 2,300   |
|                    | Idle speed                            | rpm               | 800   |
|                    | Battery voltage                       | V                 | 24VDC (2*12V, 110Ah battery in series connection) |
|                    | Fuel tank capacity                    | L                 | 150   |
| Hydraulic system   | Hydraulic oil circuit type            |                   | Open oil circuit                                  |
|                    | Main system oil pressure, Max.        | MPa               | 32  |
|                    | Stirring system oil pressure, Max.    | MPa               | 14  |
| Other Data         | Concrete slump range                  | mm                | 80 – 200  |
|                    | Allowed maximum size of aggregate     | mm                | 50for pebble , 40 for crushed stone               |
|                    | Dimension (L×W×H)                     | mm                | 6600×1930×2190                                    |
|                    | System weight                         | Kg                | 6800  |
|                    | Trailer speed                         | Km/h              | ≤8  |



## COMPANY



## CERTIFICATE



**Trade Assurance**  
100% protection for product  
quality and on-time shipment.



## Customer Visit

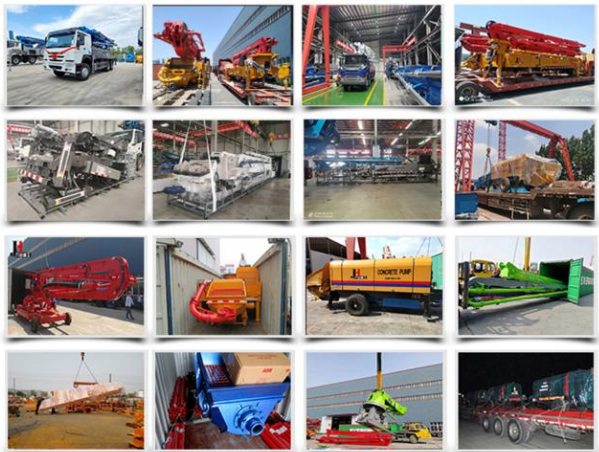




## Exhibition



## Packing



## Development strategy

Strives for the survival by the quality, seek development by science and technology

## Corporate philosophy

People-oriented, science and technology enterprise, recruiting high level scientific and technological personnel, actively introduce advanced technology at home and abroad

## JiuHe Service

As a professional company, we promise as following:

**JIUHE HEAVEY INDUSTRY MACHINERY service system MAX customer experiences.**

### A. Pre-sales service:

1. Selecting the most suitable equipment,
2. Designing your personal machinery according to special construction demands,
3. Training your technicians to operate our equipment,
4. Providing advice to ensure equipment running well in various construction environments,
5. Making new construction scheme if necessary.

### B. Sales service:

1. Equipment delivery transport agent,
2. Equipment quality control before delivery,
3. Introduce our service system to customers.

### C. After-sales service:

1. Making the first construction scheme,
2. Installing and debugging your equipment,
3. Troubleshooting on site, prompt and initiative,
4. door to door accessories and parts,
5. Opportunities to get technical communications with our engineers.

### D. Value-added service:

1. Overall process and zero distance technology tracking service for key projects,
2. Carry out large maintenance business,
3. Regular equipment checking service,
4. Technology update,
4. Provide professional periodic maintenance standards for customers.

**JIUHE HEAVEY INDUSTRY MACHINERY Service Commitments for sold equipment:**

1. Dispatch technicians to install and debug equipment in time if necessary,
2. Provide free maintenance service for the products which have product quality problems within a year after the delivery,
3. Provide free operation and maintenance training service for users

4. Provide lifelong paid maintenance service, accessories and parts supply for the sold products.

