

China JIUHE trailer Concrete line Pumps HBC100 Without Truck mobile line Concrete Pump

Our Product Introduction

for more products please visit us on concretepumpstrucks.com

Basic Information

- Place of Origin: CHINA
- Brand Name: JIUHE
- Certification: ISO CE
- Model Number: 100m3/h
- Minimum Order Quantity: 1
- Packaging Details: 40 CONTAINER
- Delivery Time: 15 WORKING DAYS
- Payment Terms: L/C, T/T
- Supply Ability: 100SET



Product Specification

- Brand: JIUHE
- Warranty: 1 Year
- Condition: New
- Brand Of Diesel Engine: DEUTZ
- Keyword: Concrete Line Pump
- Main Pump: Rexroth
- Cylinder Diameter: 200mm
- Hopper Capacity: 0.6m3
- Max. Aggregate Diameter: Crushed Stone: 40 / Pebble: 50
- Max. Delivery Distance: 1000m
- Max. Delivery Height: 260m
- Max. Horizontal Delivery Distance: 880m
- Max. Theoretical Conveying 100m3/h Capacity:
- Outlet Diameter: 105mm



More Images



Product Description

Truck mounted Concrete Line Pump PTO Driven Concrete Line Pump Concrete Pump Machinery AI-50CLPP for Australia

On the basis of mature electric commutation technology, we have developed overall hydraulic concrete pumps with excellent performance. This hydraulic system deletes PCL, constant pressure pump, accumulator and approach switch four parts that are extremely damageable parts in electronic commutation system. It greatly improves the reliability of the machine and makes sure it can work in any hard condition. Our various motor concrete pumps(diesel engine concrete pumps) mainly cover capacity from 30-120m³/h and pressure from 5-20Mpa.

ITEM 目	UNIT	SPECIFICATION 明
Model 型号		JHZ514THB-100-22
Driving system	Chassis brand 底 品牌	JIEFANG/ CA1167
	Fuel type 燃料 型	Diesel
	Displacement/Power	L/KW 4.4/162
	Displacement standard 排放 准	GB3847/GB17691 National Standard V
	Tyre model 胎型号	9.00R20
	Axle base 距	m 4.9
	quantity of axles 数	2
	Max. driving speed 最大行 速度	Km/h 89
	Front wheel base 前 距	mm 1800
	Back wheel base 后 距	mm 1740
Pumpi ng system	Brand of diesel engine 柴油机 品牌	DEUTZ
	Diesel engine model 柴油机型 号	BF6M1013-25T3R
	Diesel engine power 柴油机功 率	KW 186
	Driving mode 行	Hydraulic driving
	Main oil pump 主油	Rexroth
	Oil cylinder inner diameter × stroke 油缸内径×行程	mm Φ180×1900
	Concrete cylinder inner diameter × stroke 混凝土缸X行程	mm Φ230×1900
	Oil pressure of system 系 油	MPa 32
	Switch of H-pressure and L-pressure 高低 装置	Equipped
	Fuel tank capacity 燃料油缸容量	L 300
	Oil tank capacity 液 油缸容量	L 740
	Cooling mode of hydraulic system 液 系 冷却形式	Fan cooling 冷
	Hopper capacity 料斗容	m³ 0.6
	Feeding height 上料高度	mm ≤1500
	Concrete slump 混凝土 落度	cm 14 23
	Max. aggregate diameter 最大骨料粒径	mm Crushed stone: 40 / Pebble: 50 碎石40卵石50
	Valve 管	S Valve S
	Water pump for cleaning 清洗水	water pump
	Concrete pipe cleaning mode 混凝土管路清洗方式	Water cleaning 水洗
	Water tank capacity 水箱容	L 400
Overall dimension	Operation mode 操作方式	Manual /Wire 手 ,有 遥控
	Lubrication mode 滑方式	Automatic 自
	Length (mm) 度	mm 9195
Overall dimension	Width (mm) 度	mm 2458
	Height (mm) 高度	mm 2623

Our Product Introduction

for more products please visit us on concretepumpstrucks.com

Full-load total weight 重	Kg	13500
--------------------------	----	-------





CERTIFICATE



Trade Assurance

100% protection for product quality and on-time shipment.



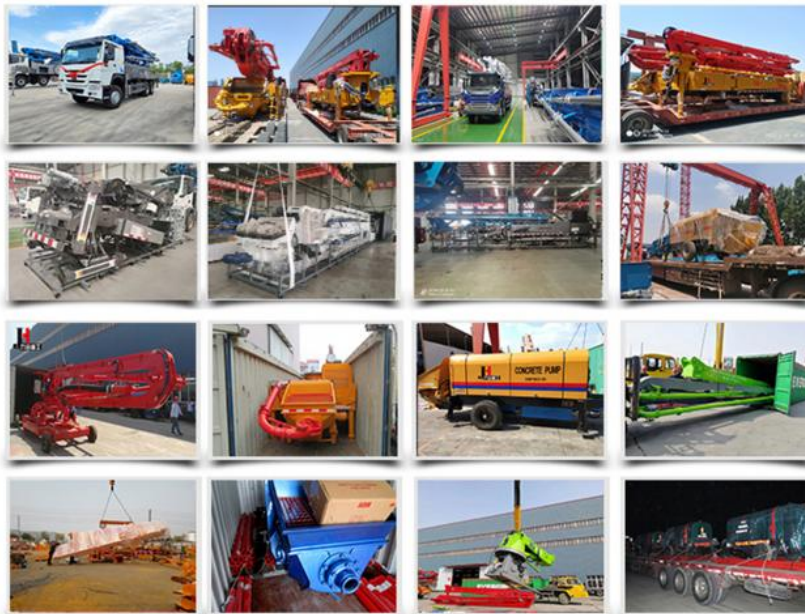
Customer Visit



Exhibition



Packing



Development strategy

Strives for the survival by the quality, seek development by science and technology

Corporate philosophy

People-oriented, science and technology enterprise, recruiting high level scientific and technological personnel, actively introduce advanced technology at home and abroad

JiuHe Service

As a professional company, we promise as following:

JIUHE HEAVEY INDUSTRY MACHINERY service system MAX customer experiences.

A. Pre-sales service:

1. Selecting the most suitable equipment,
2. Designing your personal machinery according to special construction demands,
3. Training your technicians to operate our equipment,
4. Providing advice to ensure equipment running well in various construction. environments,
5. Making new construction scheme if necessary.

B. Sales service:

1. Equipment delivery transport agent,
2. Equipment quality control before delivery,
3. Introduce our service system to customers.

C. After-sales service:

1. Making the first construction scheme,
2. Installing and debugging your equipment,
3. Troubleshooting on site, prompt and initiative,
4. door to door accessories and parts,
5. Opportunities to get technical communications with our engineers.

D. Value-added service:

1. Overall process and zero distance technology tracking service for key projects,
2. Carry out large maintenance business,
3. Regular equipment checking service,
4. Technology update,
4. Provide professional periodic maintenance standards for customers.

JIUHE HEAVEY INDUSTRY MACHINERY Service Commitments for sold equipment:

1. Dispatch technicians to install and debug equipment in time if necessary,
2. Provide free maintenance service for the products which have product quality problems within a year after the delivery,
3. Provide free operation and maintenance training service for users
4. Provide lifelong paid maintenance service, accessories and parts supply for the sold products.

□



Qingdao Jiuhe Heavy Industry Machinery Co., Ltd



+8618765268972



bella@jiuhezg.com



concretepumpstrucks.com

No.977 Qingwei Road, Jinkou Town, Jimo, Qingdao.