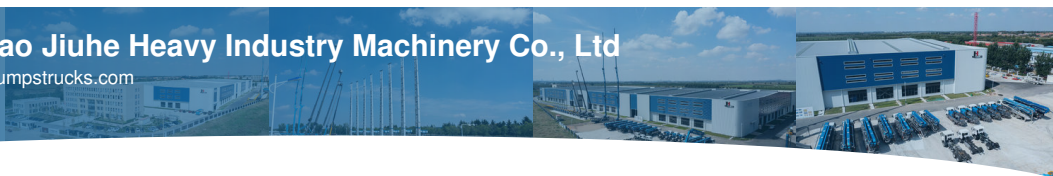




**Qingdao Jiuhe Heavy Industry Machinery Co., Ltd**  
concretepumpstrucks.com



## JIUHE 45VK Aerial Platform Truck With HOWO Chassis High Height Work Operation Truck

Our Product Introduction

for more products please visit us on [concretepumpstrucks.com](http://concretepumpstrucks.com)

### Basic Information

- Place of Origin: CHINA
- Brand Name: JIUHE
- Certification: ISO CE
- Model Number: 45m
- Minimum Order Quantity: 1
- Price: 105000USD-110000USD
- Delivery Time: 15 WORKING DAYS
- Payment Terms: L/C, T/T
- Supply Ability: 100SET



### Product Specification

- Model: 45m
- Brand Name: JIUHE Or JH
- Rated Load: 400kg
- Conditon: New
- Emission Standard: Euro 6
- Place Of Origin: ShanDong,China
- Horsepower: 150-250HP
- Engine Capacity: 4-6L
- Fuel: Diesel
- Transmission Type: Automatic
- Dimensions(L\*W\*H)(MM): 9680\*2500\*3890
- Fuel Tank Capacity: 300-400L
- Drive Method: 4\*2
- Total Weight: 18000kg
- Highlight: 45VK Aerial Platform Truck,



### More Images



## Product Description

Manufacturer JIUHE 45VK Aerial Work Platform Truck Price With HOWO Chassis High Height Work Operation Truck For Sale

# 45m High Altitude Aerial Operation Lifting Platform Truck Price

*JIUHE 45M truck mounted aerial work platform( high altitude working truck ) is new product of JIUHE group, set many function in one machine, specification, performance advanced than domestic same level products.*

□

JIUHE High altitude working truck Available Model:21M 23M 25M 29M 38M 45M, any model interest you, welcome contact us.

### Main features as follows:

1. china aerial platform Lightweight design of the whole vehicle, welded with high-strength steel, with beautiful appearance;
2. The boom and outrigger are welded with high-strength steel, with beautiful appearance, large force and high strength;
3. The telescopic boom expand and contract synchronously, which is fast, stable and reliable;
4. The front and rear outriggers have good stability and large span. The outriggers can be operated at the same time or separately, and the operation is flexible. Can adapt to a variety of working conditions;
5. The turntable rotates 350 left and right, and adopts a double deceleration mechanism to move smoothly
6. Aerial work vehicle adopt Automatic control by controller, with display screen, setting protection mode to limit amplitude, safe and reliable;
7. Soft Leg Protection: Our 45-meter aerial work platform features intelligent soft leg protection. This function is designed to ensure the safety of operators. When the supporting legs encounter irregular or uneven terrain, the system automatically detects and halts upward movements to prevent vehicle instability or tipping.
8. Cabin Collision Prevention: To further enhance safety, our high-altitude vehicle is equipped with a cabin collision prevention feature. When the boom rapidly approaches the cabin, the system automatically stops the motion to prevent accidental collisions or trapping of the operator.
9. Single-Leg Operation: To improve operational flexibility, our aerial work platform allows for single-leg operation of the supporting legs. This means that in confined spaces, you can easily carry out high-altitude work without the need to set up the entire supporting leg system, saving time and labor.
10. Remote Wireless Control: Our high-altitude vehicle is equipped with an advanced remote wireless control system. This allows operators to have precise control over the vehicle while remaining in a safe position, away from potential risks. This feature is particularly valuable when working at heights or in situations where close proximity to the vehicle is inconvenient.
11. Ease of Maintenance: The design of the high-altitude vehicle takes into consideration ease of maintenance, reducing the time and cost associated with maintenance and servicing. This ensures the equipment's reliable operation over an extended period.

Technical parameter of 45m Aerial work truck

chassis parameter	Model	CA1189PK15L2BE6A81	
	engine	CA4DK1-22E61	
	Emission Standards	GB3847-2005, GB17691-2018 National VI	
	engine maximum power/Rotating speed	162 KW/2300(r/min)	
	Wheelbase (mm)	4900	
	drive form	4×2	
	cab	Flat-top, single row, 3 people	
vehicle main parameter	Dimensions (mm)	Length 9680×width 2495×height 4000	
	Overhang (mm)	Front suspension 1335; rear suspension 2530	
	Approach angle (degree)	twenty one	
	Departure angle(degree)	13	
	Total mass (KG)	18000	
	Curb weight(KG)	17805	
Upper unit basic data	boom	Boom form	Seven-section synchronous telescopic boom
		Material	high strength steel
		Boom section	8-sided
		Amplitude	Double-cylinder luffing, more stable
		undulation angle	0°-80°(relative to horizontal plane)
	Working conditions	maximum working height (m)	45
		Maximum platform bottom height(m)	43.5
		Maximum working range(m)	28
		Maximum platform capacity(KG)	400or2people
		Turntable rotation	350°
	outrigger	form	Front X Back X
		Material	high strength steel
		Section number	4 horizontal sections, 2 vertical sections
		span	Portrait 7495 Horizontal 7150 (front)/7200 (rear)
		safety equipment	Ground detection switch, alarm indicator, buzzer and level















## COMPANY





## CERTIFICATE



**Trade Assurance**

100% protection for product quality and on-time shipment.



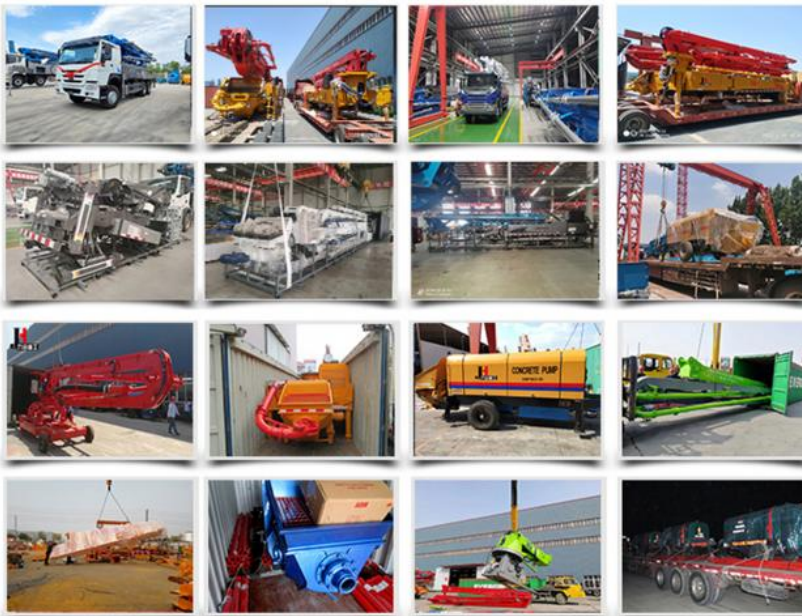
## Customer Visit



## Exhibition



## Packing



## Development strategy

Strives for the survival by the quality, seek development by science and technology

## Corporate philosophy

People-oriented, science and technology enterprise, recruiting high level scientific and technological personnel, actively introduce advanced technology at home and abroad

## JiuHe Service

As a professional company, we promise as following:

**JIUHE HEAVEY INDUSTRY MACHINERY service system MAX customer experiences.**

### A. Pre-sales service:

1. Selecting the most suitable equipment,
2. Designing your personal machinery according to special construction demands,
3. Training your technicians to operate our equipment,
4. Providing advice to ensure equipment running well in various construction. environments,
5. Making new construction scheme if necessary.

### B. Sales service:

1. Equipment delivery transport agent,
2. Equipment quality control before delivery,
3. Introduce our service system to customers.

**C. After-sales service:**

1. Making the first construction scheme,
2. Installing and debugging your equipment,
3. Troubleshooting on site, prompt and initiative,
4. door to door accessories and parts,
5. Opportunities to get technical communications with our engineers.

**D. Value-added service:**

1. Overall process and zero distance technology tracking service for key projects,
2. Carry out large maintenance business,
3. Regular equipment checking service,
4. Technology update,
4. Provide professional periodic maintenance standards for customers.

**JIUHE HEAVEY INDUSTRY MACHINERY Service Commitments for sold equipment:**

1. Dispatch technicians to install and debug equipment in time if necessary,
2. Provide free maintenance service for the products which have product quality problems within a year after the delivery,
3. Provide free operation and maintenance training service for users
4. Provide lifelong paid maintenance service, accessories and parts supply for the sold products.

□

□



**Qingdao Jiuhe Heavy Industry Machinery Co., Ltd**



+8618765268972



bella@jiuhezg.com



concretepumpstrucks.com

No.977 Qingwei Road, Jinkou Town, Jimo, Qingdao.