



## JIUHE Factory Supply 38m 38X-5RZ-3 Small Concrete Pump Truck Price Truck Mounted Pump For Concrete

Our Product Introduction

for more products please visit us on [concretepumpstrucks.com](http://concretepumpstrucks.com)

### Basic Information

- Place of Origin: CHINA
- Brand Name: JIUHE
- Certification: ISO CE
- Model Number: 38m
- Minimum Order Quantity: 1
- Delivery Time: 25 WORKING DAYS
- Payment Terms: L/C, T/T
- Supply Ability: 100SET



### Product Specification

- Brand: JIUHE
- Warranty: 1 Year
- Condition: New
- Color: As Requested
- Keyword: Concrete Pumps
- Main Pump: REXROTH
- Wireless Remote Control: HBC
- Folding Type Of Boom: RZ
- Highlight: jiuhe truck mounted concrete pump 38X-5RZ-3, jiuhe concrete pump truck mounted 38X-5RZ-3, jiuhe 38X-5RZ-3 concrete pump truck mounted



### More Images



### Product Description

#### JIUHE factory supply 38m 38X-5RZ-3 small concrete pump truck price truck mounted pump for concrete



|   |                                      |                     |
|---|--------------------------------------|---------------------|
| 1 | Chassis Reform And Innovation Leader |                     |
| 2 | Chassis Brand                        | Sinotruk            |
| 3 | Engine Power                         | 310HP               |
| 4 | Booms system                         |                     |
| 5 | Max. Vertical Concrete Placing       |                     |
| 6 | Max. Horizontal Concrete Placing     |                     |
| 3 | Concrete placing depth(M)            | 25                  |
| 4 | Control mode                         | Electric proportion |
| 5 | Folding type of boom                 | RZ type             |
| 6 | Folding type of boom                 | 360°                |

1. Impressive 38-Meter Pumping height, making it suitable for bridges, and tunnels.

2. Powerful Pumping Performance, this pump truck efficiently transport concrete.

3. Flexibility and Ease of Operation, flexible and user-friendly, allowing it to be easily controlled by the operator.

4. Flexibility and Ease of Operation, flexible and user-friendly, allowing it to be easily controlled by the operator.

5. Safety and Easy Maintenance, to ensure job site safety. Add maintenance support to ensure

|  |  |                    |
|--|--|--------------------|
| 7  | Opening mode of landing leg                    | X-R                |
| 8  | Length of end hose (MM)                        | 3000               |
| 9  | Concrete delivery pipe dia.                    | 125                |
| <b>III. Electric Control System</b>      |  |                    |
| 1  | Working voltage:                               | 24                 |
| <b>IV. Hydraulic transmission system</b> |  |                    |
| 1  | Type of hydraulic system                       | Open type          |
| 2  | System working pressure (Mpa)                  | 31.5               |
| 3  | Displacement of main hydraulic oil pump (ml/r) | 190                |
| 4  | Hydraulic fuel tank capacity (l)               | 600                |
| 5  | Cooling mode of hydraulic oil                  | Forced-air Cooling |
| 6  | High-low pressure changeover valve             | None               |
| <b>VII. Pumping system</b>               |  |                    |
| 1  | Form of concrete distribution valve            | S Valve            |
| 2  | concrete cylinder                              | 230                |
| 3  | Maximum feeding height (MM)                    | 1500               |
| 4  | Hopper capacity (M3 )                          | 0.65               |
| 5  | Slump of pumped concrete                       | 160-220            |
| 6  | Dimension of allowable maximum aggregate (MM)  | 40                 |





Projects  
工程案例



Projects  
工程案例





## COMPANY



## CERTIFICATE



### Trade Assurance

100% protection for product quality and on-time shipment.



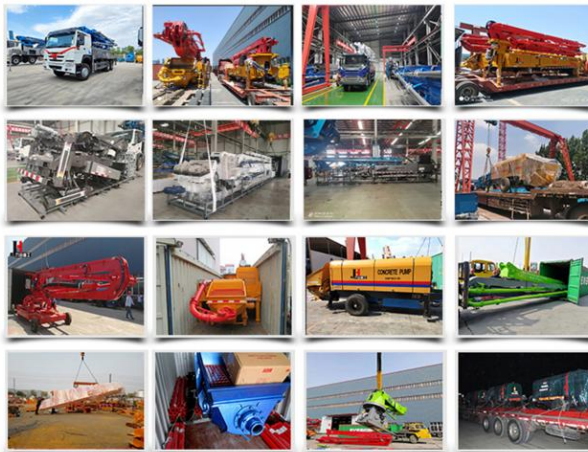
## Customer Visit



## Exhibition



## Packing



## Development strategy

Strives for the survival by the quality, seek development by science and technology

## Corporate philosophy

People-oriented, science and technology enterprise, recruiting high level scientific and technological personnel, actively introduce advanced technology at home and abroad

## JiuHe Service

As a professional company, we promise as following:

**JIUHE HEAVEY INDUSTRY MACHINERY service system MAX customer experiences.**

### A. Pre-sales service:

1. Selecting the most suitable equipment,
2. Designing your personal machinery according to special construction demands,
3. Training your technicians to operate our equipment,
4. Providing advice to ensure equipment running well in various construction environments,
5. Making new construction scheme if necessary.

### B. Sales service:

1. Equipment delivery transport agent,
2. Equipment quality control before delivery,
3. Introduce our service system to customers.

### C. After-sales service:

1. Making the first construction scheme,
2. Installing and debugging your equipment,
3. Troubleshooting on site, prompt and initiative,
4. door to door accessories and parts,
5. Opportunities to get technical communications with our engineers.

### D. Value-added service:

1. Overall process and zero distance technology tracking service for key projects,
2. Carry out large maintenance business,
3. Regular equipment checking service,
4. Technology update,
4. Provide professional periodic maintenance standards for customers.

**JIUHE HEAVEY INDUSTRY MACHINERY Service Commitments for sold equipment:**

1. Dispatch technicians to install and debug equipment in time if necessary,
2. Provide free maintenance service for the products which have product quality problems within a year after the delivery,
3. Provide free operation and maintenance training service for users

4. Provide lifelong paid maintenance service, accessories and parts supply for the sold products.

