



Qingdao Jiuhe Heavy Industry Machinery Co., Ltd
concretepumpstrucks.com



JIUHE JIEFANG 4*2 Hydraulic Lift Platform Truck 45m Truck Mounted Aerial Working Platform With Bucket

Our Product Introduction

for more products please visit us on concretepumpstrucks.com

Basic Information

- Place of Origin: CHINA
- Brand Name: JIUHE
- Certification: ISO CE
- Model Number: 45m
- Minimum Order Quantity: 1
- Price: 20000USD-37000USD
- Delivery Time: 15 WORKING DAYS
- Payment Terms: L/C, T/T
- Supply Ability: 100SET



Product Specification

- Model: 45m
- Name: Aerial Platform Truck
- Rated Load: 400kg
- Highlight: JIEFANG 4*2 Aerial Platform Truck, Truck Mounted Hydraulic Aerial Platform Truck, JIEFANG 4*2 truck mounted hydraulic platform



More Images



Product Description

JIUHE JIEFANG 4*2 Hydraulic Lift Platform Truck 45m Truck Mounted Aerial Working Platform with Bucket

JIUHE 45M truck mounted aerial work platform(high altitude working truck) is new product of JIUHE group, set many function in one machine, specification, performance advanced than domestic same level products.

JIUHE High altitude working truck Available Model: **21M 23M 25M 29M 38M 45M**, any model interest you, welcome contact us.

Main features as follows:

1. china aerial platform Lightweight design of the whole vehicle, welded with high-strength steel, with beautiful appearance;
2. The boom and outrigger are welded with high-strength steel, with beautiful appearance, large force and high strength;
3. The telescopic boom expand and contract synchronously, which is fast, stable and reliable;
4. The front and rear outriggers have good stability and large span. The outriggers can be operated at the same time or separately, and the operation is flexible. Can adapt to a variety of working conditions;
5. The turntable rotates 350 left and right, and adopts a double deceleration mechanism to move smoothly
6. Aerial work vehicle adopt Automatic control by controller, with display screen, setting protection mode to limit amplitude, safe and reliable;
7. Soft Leg Protection: Our 45-meter aerial work platform features intelligent soft leg protection. This function is designed to ensure the safety of operators. When the supporting legs encounter irregular or uneven terrain, the system automatically detects and halts upward movements to prevent vehicle instability or tipping.
8. Cabin Collision Prevention: To further enhance safety, our high-altitude vehicle is equipped with a cabin collision prevention feature. When the boom rapidly approaches the cabin, the system automatically stops the motion to prevent accidental collisions or trapping of the operator.
9. Single-Leg Operation: To improve operational flexibility, our aerial work platform allows for single-leg operation of the supporting legs. This means that in confined spaces, you can easily carry out high-altitude work without the need to set up the entire supporting leg system, saving time and labor.
10. Remote Wireless Control: Our high-altitude vehicle is equipped with an advanced remote wireless control system. This allows operators to have precise control over the vehicle while remaining in a safe position, away from potential risks. This feature is particularly valuable when working at heights or in situations where close proximity to the vehicle is inconvenient.
11. Ease of Maintenance: The design of the high-altitude vehicle takes into consideration ease of maintenance, reducing the time and cost associated with maintenance and servicing. This ensures the equipment's reliable operation over an extended period.

| | | | |
|------------------------------|-------------------------------------|--|--|
| chassis parameter | Model | CA1189PK15L2BE6A81 | |
| | engine | CA4DK1-22E61 | |
| | Emission Standards | GB3847-2005, GB17691-2018 National VI | |
| | engine maximum power/Rotating speed | 162 KW/2300(r/min) | |
| | Wheelbase (mm) | 4900 | |
| | drive form | 4×2 | |
| | cab | Flat-top, single row, 3 people | |
| vehicle main parameter | Dimensions (mm) | Length 9680×width 2495×height 4000 | |
| | Overhang (mm) | Front suspension 1335; rear suspension 2530 | |
| | Approach angle (degree) | twenty one | |
| | Departure angle(degree) | 13 | |
| | Total mass (KG) | 18000 | |
| | Curb weight(KG) | 17805 | |
| Upper unit basic data | boom | Boom form | Seven-section synchronous telescopic boom |
| | | Material | high strength steel |
| | | Boom section | 8-sided |
| | | Amplitude | Double-cylinder luffing, more stable |
| | | undulation angle | 0°-80°(relative to horizontal plane) |
| | Working conditions | maximum working height (m) | 45 |
| | | Maximum platform bottom height(m) | 43.5 |
| | | Maximum working range(m) | 28 |
| | | Maximum platform capacity(KG) | 400or2people |
| | | Turntable rotation | 350° |
| | outrigger | form | Front X Back X |
| | | Material | high strength steel |
| | | Section number | 4 horizontal sections, 2 vertical sections |
| | | span | Portrait 7495 Horizontal 7150 (front)/7200 (rear) |
| | | safety equipment | Ground detection switch, alarm indicator, buzzer and level |









COMPANY



CERTIFICATE



Trade Assurance

100% protection for product quality and on-time shipment.



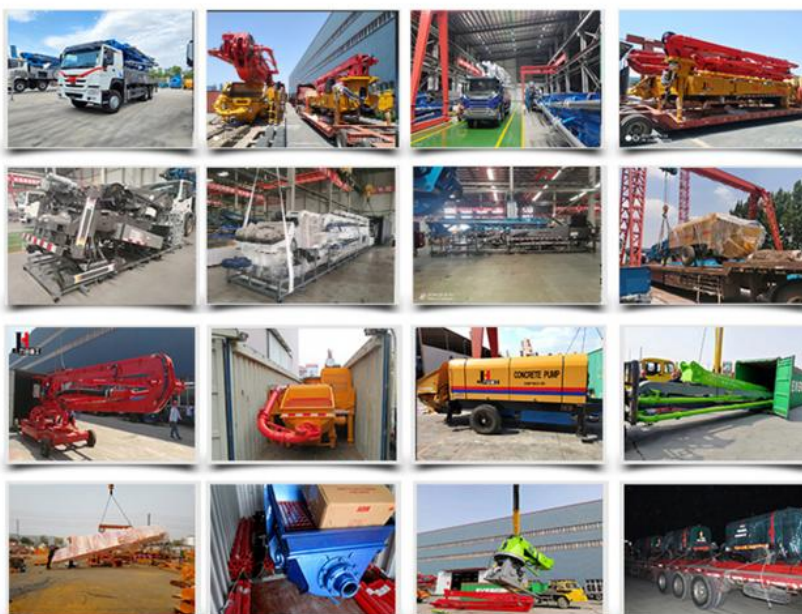
Customer Visit



Exhibition



Packing



Development strategy

Strives for the survival by the quality, seek development by science and technology

Corporate philosophy

People-oriented, science and technology enterprise, recruiting high level scientific and technological personnel, actively introduce advanced technology at home and abroad

JiuHe Service

As a professional company, we promise as following:

JIUHE HEAVEY INDUSTRY MACHINERY service system MAX customer experiences.

A. Pre-sales service:

1. Selecting the most suitable equipment,
2. Designing your personal machinery according to special construction demands,
3. Training your technicians to operate our equipment,
4. Providing advice to ensure equipment running well in various construction. environments,
5. Making new construction scheme if necessary.

B. Sales service:

1. Equipment delivery transport agent,
2. Equipment quality control before delivery,
3. Introduce our service system to customers.

C. After-sales service:

1. Making the first construction scheme,
2. Installing and debugging your equipment,
3. Troubleshooting on site, prompt and initiative,
4. door to door accessories and parts,
5. Opportunities to get technical communications with our engineers.

D. Value-added service:

1. Overall process and zero distance technology tracking service for key projects,
2. Carry out large maintenance business,
3. Regular equipment checking service,
4. Technology update,
4. Provide professional periodic maintenance standards for customers.

JIUHE HEAVEY INDUSTRY MACHINERY Service Commitments for sold equipment:

1. Dispatch technicians to install and debug equipment in time if necessary,
2. Provide free maintenance service for the products which have product quality problems within a year after the delivery,
3. Provide free operation and maintenance training service for users
4. Provide lifelong paid maintenance service, accessories and parts supply for the sold products.

Qingdao Jiuhe Heavy Industry Machinery Co.,Ltd



Bella Chao
Sales Manager
+86-18765268972



 +86-18765268972
 +86-15764227812
 +86-15764227812
 Bella@jiuhezg.com



Qingdao Jiuhe Heavy Industry Machinery Co., Ltd



+8618765268972



bella@jiuhezg.com



concretepumpstrucks.com

No.977 Qingwei Road, Jinkou Town, Jimo, Qingdao.