



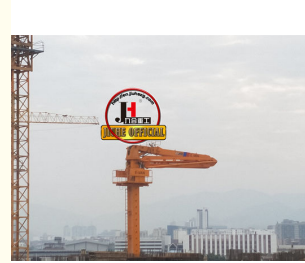
JIUHE HG28B 28 Meters Zoomlion Concrete Pump Placing Boom 3 Section Boom Concrete Boom Placer

Our Product Introduction

for more products please visit us on concretepumpstrucks.com

Basic Information

- Place of Origin: CHINA
- Brand Name: JIUHE
- Certification: ISO CE
- Model Number: 33m
- Minimum Order Quantity: 1
- Delivery Time: 15 WORKING DAYS
- Payment Terms: L/C, T/T
- Supply Ability: 100SET



Product Specification

- Model: 33m
- UNIQUE SELLING POINT: Fully Hydraulic System
- Condition: New
- Power: 380V/50Hz
- Highlight: HG28B boom placer machine 3 section ,
28 meters zoomlion boom placer,
28 meters boom placer machine 3 section



More Images



Product Description

JIUHE HG28B: 28 meters zoomlion concrete pump placing boom 3 section boom concrete boom placer
33m self-climbing concrete placing boom

The self-climbing concrete placing boom is commonly used worldwide in various construction and building projects, especially in situations requiring concrete pouring at heights or within confined spaces. This type of equipment is highly beneficial and versatile. It finds widespread use in the construction industry and infrastructure development.

It is typically employed in the construction of high-rise buildings, bridges, tunnels, dams, factories, and a wide range of other construction projects. Such equipment is a common sight in construction and civil engineering globally.

Here are the advantages of our 33-meter self-climbing concrete placing boom, as described:

1. **Efficient Construction:** Our 33-meter self-climbing concrete placing boom is designed for efficient construction. It can rapidly and accurately place concrete at various project locations, reducing labor and time costs while increasing construction speed.
2. **Exceptional Working Range:** This equipment boasts outstanding horizontal and vertical coverage, effortlessly reaching various construction areas, including high-rise buildings, bridges, tunnels, and more. This provides greater construction flexibility.
3. **Automatic Elevation:** The self-climbing feature allows the placing boom to elevate itself without the need for additional lifting equipment. This reduces site complexity and costs while enhancing efficiency.

4. Stability and Safety: We have always prioritized the stability and safety of our equipment. Our self-climbing concrete placing boom undergoes rigorous design and testing to ensure stable operation in various construction conditions, guaranteeing the safety of workers.

Model	HG33	
Delivery pipe dimension(outside diameterxthickness) (mmxmm)	133x4.5	
Delivery hose dimension (inside diameterxlength) (mmxmm)	p125x3000	
Radius of placing boom(m)	32.7	
Stationary height(to the join between the end of the boom and swivel table(m)	22.7	
tower body mast section (mm)	750x750	
Three hydraulicfoldable arms	1st section	8.86
	2nd section	7.96
	3rd section	7.96
	4rd section	7.96
Slewing range()	360	
Power of motor(kw)	30	
Pressure of hydraulic system (MPa)	32	
Type of hydraulic oil	AW68	
The min.Interval of climbingFrame (m)	Climbing	3.0
	Placing concrete	6.0
	Resting	
Mode of operation	1.cable remote control2. radio remote control	
power	380V/50Hz	
wind speed	Placing concrete	≤60 km/h
	Climbing	≤28 km/ h
working temperature	0~60	







COMPANY



CERTIFICATE



Trade Assurance
100% protection for product
quality and on-time shipment.



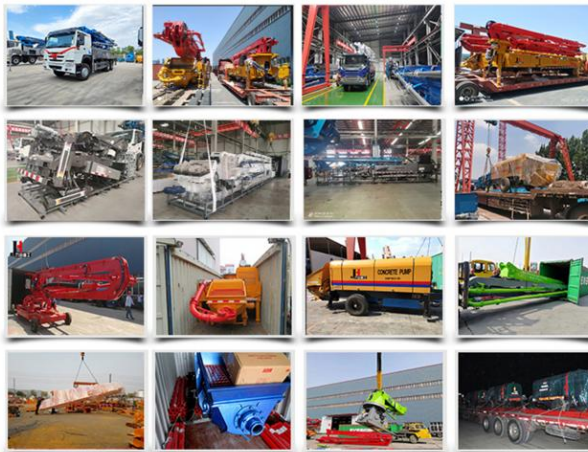
Customer Visit



Exhibition



Packing



Development strategy

Strives for the survival by the quality, seek development by science and technology

Corporate philosophy

People-oriented, science and technology enterprise, recruiting high level scientific and technological personnel, actively introduce advanced technology at home and abroad

JiuHe Service

As a professional company, we promise as following:

JIUHE HEAVEY INDUSTRY MACHINERY service system MAX customer experiences.

A. Pre-sales service:

1. Selecting the most suitable equipment,
2. Designing your personal machinery according to special construction demands,
3. Training your technicians to operate our equipment,
4. Providing advice to ensure equipment running well in various construction environments,
5. Making new construction scheme if necessary.

B. Sales service:

1. Equipment delivery transport agent,
2. Equipment quality control before delivery,
3. Introduce our service system to customers.

C. After-sales service:

1. Making the first construction scheme,
2. Installing and debugging your equipment,
3. Troubleshooting on site, prompt and initiative,
4. door to door accessories and parts,
5. Opportunities to get technical communications with our engineers.

D. Value-added service:

1. Overall process and zero distance technology tracking service for key projects,
2. Carry out large maintenance business,
3. Regular equipment checking service,
4. Technology update,
4. Provide professional periodic maintenance standards for customers.

JIUHE HEAVEY INDUSTRY MACHINERY Service Commitments for sold equipment:

1. Dispatch technicians to install and debug equipment in time if necessary,
2. Provide free maintenance service for the products which have product quality problems within a year after the delivery,
3. Provide free operation and maintenance training service for users

4. Provide lifelong paid maintenance service, accessories and parts supply for the sold products.

