



Diesel Concrete Cement Pumping Machine Spare Parts Stationary Trailer Concrete Pump Machine

Our Product Introduction

for more products please visit us on concretepumpstrucks.com

Basic Information

- Place of Origin: CHINA
- Brand Name: JIUHE
- Certification: ISO CE
- Model Number: 80m³/h
- Minimum Order Quantity: 1
- Packaging Details: 40 CONTAINER
- Delivery Time: 15 WORKING DAYS
- Payment Terms: L/C, T/T
- Supply Ability: 100SET



Product Specification

- Brand: JIUHE
- Warranty: 1 Year
- Condition: New
- Color: As Requested
- Keyword: Concrete Pump
- Main Pump: Kawasaki
- Cylinder Diameter: 200mm
- Hopper Capacity: 0.45m³
- Max. Aggregate Diameter: 40mm
- Max. Delivery Distance: 1000m
- Max. Delivery Height: 250m
- Max. Horizontal Delivery Distance: 800m
- Max. Theoretical Conveying Capacity: 90m³/h
- Outlet Diameter: 125mm



More Images



Product Description

Diesel concrete cement pumping machine spare parts stationary trailer concrete pump machine for sale price

Introducing the 80m³/h Hydraulic Trailer Pump by JIUHE GROUP, an exceptional piece of engineering equipment that combines state-of-the-art technology with time-tested design to provide unparalleled advantages for your construction projects. Here are the key features and advantages of our 80m³/h Hydraulic Trailer Pump:

1. High Productivity: Our 80m³/h Hydraulic Trailer Pump boasts outstanding pumping capacity, handling 60 cubic meters of concrete per hour, ensuring rapid progress in construction schedules. It is suitable for both small and large-scale construction projects.
2. Exceptional Pumping Performance: The hydraulic trailer pump features an efficient hydraulic system and precise pumping mechanism, ensuring stable and reliable pumping performance. It delivers uniform pumping regardless of concrete mix, reducing waste.
3. Convenient Operation: Designed with operator convenience in mind, the hydraulic trailer pump is easy to operate. Equipped with an intuitive control panel, operators can easily master the equipment, enhancing construction efficiency.
4. Robust Durability: The 80m³/h Hydraulic Trailer Pump is constructed using high-strength materials and impeccable manufacturing processes, ensuring the equipment's durability. It can withstand testing conditions in various challenging construction environments and operate reliably over the long term.
5. Versatile Multi-Purpose: This hydraulic trailer pump is not limited to concrete pumping; it can also be used for conveying mortar, paste-like materials, and other granular substances, making it a versatile construction tool.

Our Product Introduction

Item		Unit	Data
System Performance	Maximum theoretical displacement	m ³ /h	80
	Maximum theoretical delivery pressure	Mpa	16
	Distribution valve type		S-pipe valve
	Delivery cylinder size	mm	200×1,650
	Main oil cylinder size	mm	140/90×1,650
	Oil tank capacity	L	420
	Hopper capacity	L	600
	Feeding height	mm	1,400
	Discharge outlet diameter	mm	150
	Carrier pipe inner diameter	mm	125
Power system	Diesel engine power	Kw	176
	Rated rotation speed	rpm	2,300
	Idle speed	rpm	800
	Battery voltage	V	24VDC (2*12V, 110Ah battery in series connection)
	Fuel tank capacity	L	150
Hydraulic system	Hydraulic oil circuit type		Open oil circuit
	Main system oil pressure, Max.	MPa	32
	Stirring system oil pressure, Max.	MPa	14
Other Data	Concrete slump range	mm	80 – 200
	Allowed maximum size of aggregate	mm	50for pebble , 40 for crushed stone
	Dimension (L×W×H)	mm	6600×1930×2190
	System weight	Kg	6800
	Trailer speed	Km/h	≤8



COMPANY



CERTIFICATE



Trade Assurance

100% protection for product quality and on-time shipment.



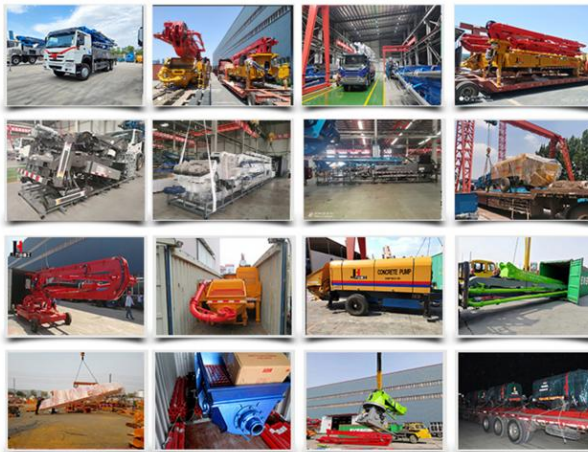
Customer Visit



Exhibition



Packing



Development strategy

Strives for the survival by the quality, seek development by science and technology

Corporate philosophy

People-oriented, science and technology enterprise, recruiting high level scientific and technological personnel, actively introduce advanced technology at home and abroad

JiuHe Service

As a professional company, we promise as following:

JIUHE HEAVEY INDUSTRY MACHINERY service system MAX customer experiences.

A. Pre-sales service:

1. Selecting the most suitable equipment,
2. Designing your personal machinery according to special construction demands,
3. Training your technicians to operate our equipment,
4. Providing advice to ensure equipment running well in various construction environments,
5. Making new construction scheme if necessary.

B. Sales service:

1. Equipment delivery transport agent,
2. Equipment quality control before delivery,
3. Introduce our service system to customers.

C. After-sales service:

1. Making the first construction scheme,
2. Installing and debugging your equipment,
3. Troubleshooting on site, prompt and initiative,
4. door to door accessories and parts,
5. Opportunities to get technical communications with our engineers.

D. Value-added service:

1. Overall process and zero distance technology tracking service for key projects,
2. Carry out large maintenance business,
3. Regular equipment checking service,
4. Technology update,
4. Provide professional periodic maintenance standards for customers.

JIUHE HEAVEY INDUSTRY MACHINERY Service Commitments for sold equipment:

1. Dispatch technicians to install and debug equipment in time if necessary,
2. Provide free maintenance service for the products which have product quality problems within a year after the delivery,
3. Provide free operation and maintenance training service for users

4. Provide lifelong paid maintenance service, accessories and parts supply for the sold products.

