



## China Mortar Pump Machine Factory JIUHE Electric Mortar Pump XBS40 Small Concrete Pumps

Our Product Introduction

for more products please visit us on [concretepumpstrucks.com](http://concretepumpstrucks.com)

### Basic Information

- Place of Origin: CHINA
- Brand Name: JIUHE
- Certification: ISO CE
- Model Number: 40m3/h
- Minimum Order Quantity: 1
- Packaging Details: 40 CONTAINER
- Delivery Time: 15 WORKING DAYS
- Payment Terms: L/C, T/T
- Supply Ability: 100SET



### Product Specification

- Brand: JIUHE
- Warranty: 1 Year
- Condition: New
- Color: As Requested
- Keyword: Concrete Pump
- Main Pump: Kawasaki
- Cylinder Diameter: 200mm
- Hopper Capacity: 0.45m3
- Max. Aggregate Diameter: 20mm
- Outlet Diameter: 125mm
- Type: Trailer Concrete Pump
- Weight: 2100kg
- Highlight: mortar pump machine XBS40,  
JIUHE electric mortar pump machine,  
XBS40 Trailer Concrete Pump



### More Images



## Product Description

China mortar pump machine factory JIUHE electric mortar pump XBS40 small concrete pumps for sale

Introducing the 40m<sup>3</sup>/h Hydraulic Trailer Pump by JIUHE GROUP, an exceptional piece of engineering equipment that combines state-of-the-art technology with time-tested design to provide unparalleled advantages for your construction projects. Here are the key features and advantages of our 40m<sup>3</sup>/h Hydraulic Trailer Pump:

- 1.High Productivity:** Our 40m<sup>3</sup>/h Hydraulic Trailer Pump boasts outstanding pumping capacity, handling 60 cubic meters of concrete per hour, ensuring rapid progress in construction schedules. It is suitable for both small and large-scale construction projects.
- 2.Exceptional Pumping Performance:** The hydraulic trailer pump features an efficient hydraulic system and precise pumping mechanism, ensuring stable and reliable pumping performance. It delivers uniform pumping regardless of concrete mix, reducing waste.
- 3.Convenient Operation:** Designed with operator convenience in mind, the hydraulic trailer pump is easy to operate. Equipped with an intuitive control panel, operators can easily master the equipment, enhancing construction efficiency.
- 4.Robust Durability:** The 40m<sup>3</sup>/h Hydraulic Trailer Pump is constructed using high-strength materials and impeccable manufacturing processes, ensuring the equipment's durability. It can withstand testing conditions in various challenging construction environments and operate reliably over the long term.
- 5.Versatile Multi-Purpose:** This hydraulic trailer pump is not limited to concrete pumping; it can also be used for conveying mortar, paste-like materials, and other granular substances, making it a versatile construction tool.

Items	Units	Parameters	
Whole machines performance	Theoretical max. discharging volume	m <sup>3</sup> /h	40
	Theoretical max. delivery pressure	Mpa	13
	Max. delivery frequency	times/min	30
	The type of distribution valve		S valve
	Specification of delivery cylinder	mm	Φ140×800
	Specification of main oil cylinder	mm	Φ80/Φ50×800
	Outlet opening diameter	mm	Φ125
	Hopper capacity	L	300
Power system	Rated voltage	V	380
	Main motor power	Kw	45
	Rated speed	r/min	1470
	Assistant motor power	Kw	3
	Rated speed	r/min	1430
Hydraulic system	Hydraulic oil circuit type		Open circuit
	Max. oil pressure of pumping system	MPa	25
	Max. oil pressure of mixing system	MPa	9
	Max. mixing speed	r/min	24
	Oil tank capacity	L	200
Other parameters	Max. diameter of aggregates	mm	30
	Inner dia. of delivery pipe	mm	Φ80
	Dimension (length×width×height)	mm	4300×1500×1500
	Overall weight	Kg	2100
	Pulling speed	Km/h	≤8







## COMPANY



## CERTIFICATE



**Trade Assurance**

100% protection for product quality and on-time shipment.





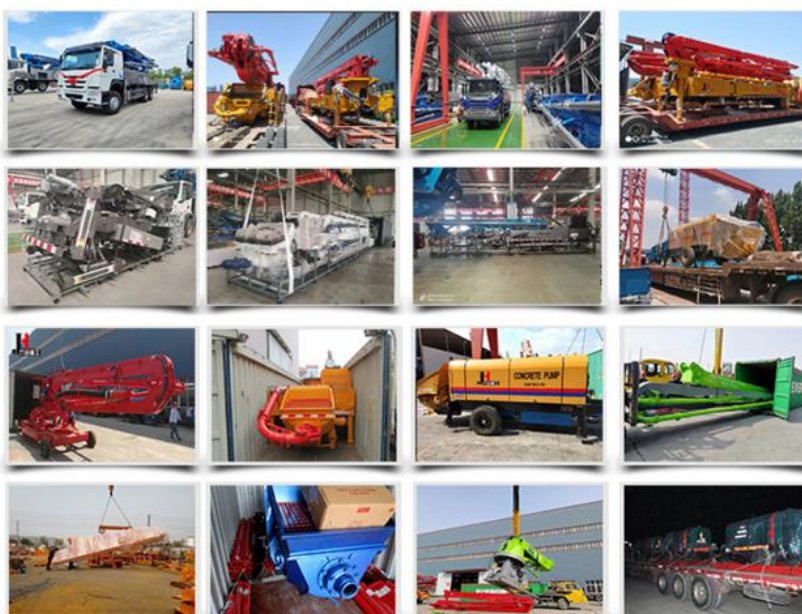
## Customer Visit



## Exhibition



## Packing



## Development strategy

Strives for the survival by the quality, seek development by science and technology

### **Corporate philosophy**

People-oriented, science and technology enterprise, recruiting high level scientific and technological personnel, actively introduce advanced technology at home and abroad

### **JiuHe Service**

As a professional company, we promise as following:

#### **JIUHE HEAVEY INDUSTRY MACHINERY service system MAX customer experiences.**

##### **A. Pre-sales service:**

1. Selecting the most suitable equipment,
2. Designing your personal machinery according to special construction demands,
3. Training your technicians to operate our equipment,
4. Providing advice to ensure equipment running well in various construction environments,
5. Making new construction scheme if necessary.

##### **B. Sales service:**

1. Equipment delivery transport agent,
2. Equipment quality control before delivery,
3. Introduce our service system to customers.

##### **C. After-sales service:**

1. Making the first construction scheme,
2. Installing and debugging your equipment,
3. Troubleshooting on site, prompt and initiative,
4. door to door accessories and parts,
5. Opportunities to get technical communications with our engineers.

##### **D. Value-added service:**

1. Overall process and zero distance technology tracking service for key projects,
2. Carry out large maintenance business,
3. Regular equipment checking service,
4. Technology update,
4. Provide professional periodic maintenance standards for customers.

#### **JIUHE HEAVEY INDUSTRY MACHINERY Service Commitments for sold equipment:**

1. Dispatch technicians to install and debug equipment in time if necessary,
2. Provide free maintenance service for the products which have product quality problems within a year after the delivery,
3. Provide free operation and maintenance training service for users
4. Provide lifelong paid maintenance service, accessories and parts supply for the sold products.

**Qingdao Jiuhe Heavy Industry Machinery Co.,Ltd**



**Bella Chao**  
Sales Manager  
+86-18765268972



+86-18765268972

+86-15764227812

+86-15764227812

Bella@jiuhezg.com



**Qingdao Jiuhe Heavy Industry Machinery Co., Ltd**



+8618765268972



bella@jiuhezg.com



concretepumpstrucks.com

No.977 Qingwei Road, Jinkou Town, Jimo, Qingdao.