



JIUHE factory supply 6x4 38m Concrete Boom Pump Truck for sale could be customized

Our Product Introduction

for more products please visit us on concretepumpstrucks.com

Basic Information

- Place of Origin: CHINA
- Brand Name: JIUHE
- Certification: ISO CE
- Model Number: 38m
- Minimum Order Quantity: 1
- Delivery Time: 25 WORKING DAYS
- Payment Terms: L/C, T/T
- Supply Ability: 100SET



Product Specification

- Brand: JIUHE
- Warranty: 1 Year
- Condition: New
- Color: As Requested
- Keyword: Concrete Pumps
- Main Pump: REXROTH
- Wireless Remote Control: HBC
- Folding Type Of Boom: RZ



More Images



Product Description



1	Max. Vertical height(M)	38
2	Max. Horizontal Concrete Placing radius (M)	34
3	Concrete placing depth(M)	25
4	Control mode	Electric proportion
5	Folding type of boom	RZ type
6	Folding type of boom	360°

1. **Impressive 38-Meter Pumping Height:** The 38-meter pump truck height, making it suitable for a wide range of construction projects, bridges, and tunnels.

2. **Powerful Pumping Performance:** Equipped with a high-performance pump, this pump truck efficiently transports concrete, ensuring the rapid completion of projects.

3. **Flexibility and Ease of Operation:** The design of Jiuhe Heavy Industry is flexible and user-friendly, allowing it to adapt to different work scenarios and easily control the pumping process, improving work efficiency.

4. **Flexibility and Ease of Operation:** The design of Jiuhe Heavy Industry is flexible and user-friendly, allowing it to adapt to different work scenarios and easily control the pumping process, improving work efficiency.

5. **Safety and Easy Maintenance:** The 38-meter pump truck is equipped with safety features to ensure job site safety. Additionally, the company provides comprehensive maintenance support to ensure the pump truck's smooth operation.

7	Opening mode of landing leg	X-R
8	Length of end hose (MM)	3000
9	Concrete delivery pipe dia.	125
III. Electric Control System		
1	Working voltage:	24
IV. Hydraulic transmission system		
1	Type of hydraulic system	Open type
2	System working pressure (Mpa)	31.5
3	Displacement of main hydraulic oil pump (ml/r)	190
4	Hydraulic fuel tank capacity (l)	600
5	Cooling mode of hydraulic oil	Forced-air Cooling
6	High-low pressure changeover valve	None
VII. Pumping system		
1	Form of concrete distribution valve	S Valve
2	concrete cylinder	230
3	Maximum feeding height (MM)	1500
4	Hopper capacity (M3)	0.65
5	Slump of pumped concrete	160-220
6	Dimension of allowable maximum aggregate (MM)	40





Projects
工程案例



Projects
工程案例



COMPANY



CERTIFICATE



Trade Assurance
100% protection for product
quality and on-time shipment.



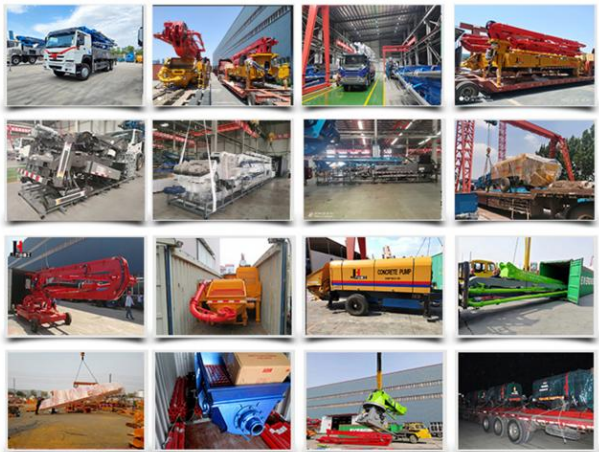
Customer Visit



Exhibition



Packing



Development strategy

Strives for the survival by the quality, seek development by science and technology

Corporate philosophy

People-oriented, science and technology enterprise, recruiting high level scientific and technological personnel, actively introduce advanced technology at home and abroad

JiuHe Service

As a professional company, we promise as following:

JIUHE HEAVEY INDUSTRY MACHINERY service system MAX customer experiences.

A. Pre-sales service:

1. Selecting the most suitable equipment,
2. Designing your personal machinery according to special construction demands,
3. Training your technicians to operate our equipment,
4. Providing advice to ensure equipment running well in various construction environments,
5. Making new construction scheme if necessary.

B. Sales service:

1. Equipment delivery transport agent,
2. Equipment quality control before delivery,
3. Introduce our service system to customers.

C. After-sales service:

1. Making the first construction scheme,
2. Installing and debugging your equipment,
3. Troubleshooting on site, prompt and initiative,
4. door to door accessories and parts,
5. Opportunities to get technical communications with our engineers.

D. Value-added service:

1. Overall process and zero distance technology tracking service for key projects,
2. Carry out large maintenance business,
3. Regular equipment checking service,
4. Technology update,
4. Provide professional periodic maintenance standards for customers.

JIUHE HEAVEY INDUSTRY MACHINERY Service Commitments for sold equipment:

1. Dispatch technicians to install and debug equipment in time if necessary,
2. Provide free maintenance service for the products which have product quality problems within a year after the delivery,
3. Provide free operation and maintenance training service for users

4. Provide lifelong paid maintenance service, accessories and parts supply for the sold products.

